

MASCOT® WORKWEAR



tested to work

MASCOT® ACCELERATE SAFE | EN



MASCOT® SAFE

A comprehensive assortment of safety workwear

MASCOT has the broadest range of safety clothing in the industry. To make it easier for you, we have divided the assortment into ranges, each with their own specific characteristics. Choose between three fluorescent colours and a huge array of products; from head to toe and from inner to outer.

Visible and safe with EN ISO 20471

EN ISO 20471 is an international standard that sets requirements for safety workwear for employees in high-risk areas. The standard is divided into three classes, according to the risk zone in which one works, and to how well the product is able to protect the employee.

Carefully choose the safety class

It is the requirement for visibility - and thus the requirement for the area of reflectors and fluorescent material – that determines which class you should choose. The highest class is class 3. At MASCOT there are two ways to attain class 3: either choose an EN ISO 20471 product that is rated class 3 on its own, e.g., a jacket, or choose two products that, when worn together, are class 3 certified.



Reasons for choosing MASCOT® SAFE

Certified visibility and safety

- Approved according to the international standard EN ISO 20471.
- The fluorescent material keeps you visible during the day and the reflectors keep you visible at night.
- The dirt repellent surface keeps the clothing cleaner and keeps you visible.

Safety workwear for everyone

- For everyone who needs certified safety workwear – functions suited for all professions.
- Trousers with up to three leg lengths and a variety of sizes.
- Three different fluorescent colours, and multiple contrast colours.

The best for your workday

- Innovative fabric qualities with focus on durability, comfort and safety.
- Unique freedom of movement for a workday at a high pace.
- Thoroughly tested pockets and details.

EN ISO 20471



EN ISO 20471







Combine products and achieve the highest protection

For you and your colleagues there are two ways to attain the highest safety class according to EN ISO 20471: either choose an EN ISO 20471 product that is rated class 3 on its own, or choose two products that together are class 3 certified. MASCOT has had approved a unique and simple letter system that makes it easier to understand the various classes and provides an overview of the different combination options for attaining class 3 clothing. The system is approved by the certification institute and eliminates uncertainty. In this way, employees always have the correct safety class.

Assembly-certification

At MASCOT you can combine two individual products with EN ISO 20471 certification and attain class 3 for the assembled set.

Tops with reflective strips on sleeves



Vests, and tops without reflective strips on sleeves

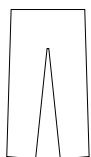


A

B

C

Trousers *)



Y



Z



Shorts or 3/4 Length Trousers



X



*) Bib & Braces can be combined into a certified class 2 or 3 as long as the upper body garment is worn over the bib. If the T-shirt or top is worn under the bib, then it is the class of the Bib & Brace alone that determines the total class.

Jacket 19009-511 is certified class 2 (product group A) and ¾ length trousers with kneepad pockets and holster pockets 19049-711 are certified class 1 (product group X). When combining these two products, you achieve the highest safety, certified class 3. In the same way, you can combine all MASCOT's products to achieve a higher certification class. Next to each picture with safety workwear we have mentioned the certification class of the entire outfit. Look for the symbol.

MASCOT® ACCELERATE SAFE



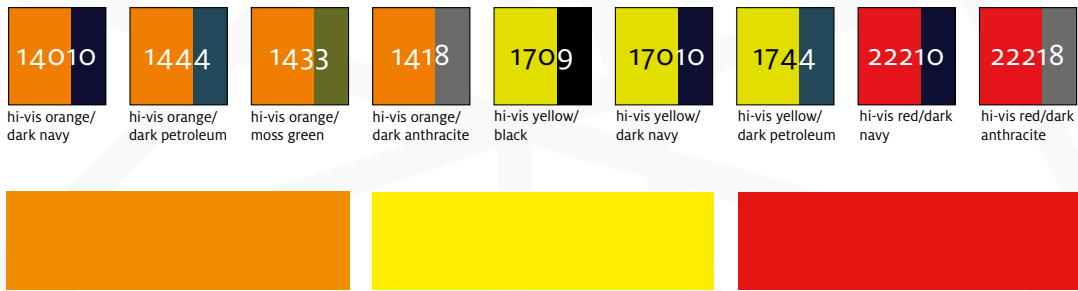
MASCOT®
ACCELERATE
SAFE

MASCOT® ACCELERATE SAFE

The MASCOT® ACCELERATE SAFE range offers hi-vis clothing for anyone in need of visibility, maximum freedom of movement and plenty of functional details. The range is for users who need something extra from their safety clothing.

ULTIMATE
STRETCH▶
WORKWEAR

MASCOT® ACCELERATE SAFE is available in the following colour combinations



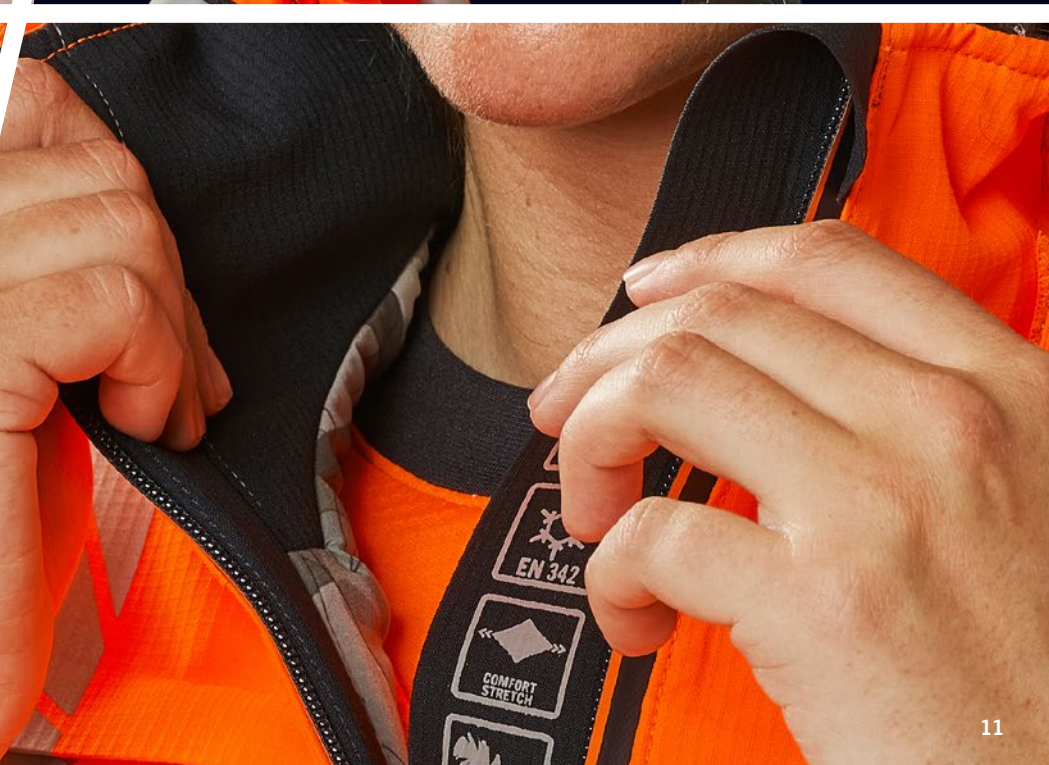
All in the detail



Effective ventilation to the leg via the zip on the back of the thigh.



Unique CLIMASCOT® lining ensures effective heat-retention. It is light, soft and takes up next to no space when compressed.



Trousers in MASCOT® ACCELERATE SAFE

Find the trousers in the MASCOT® ACCELERATE SAFE range that best match the job in hand. Use the product variants and fabric qualities to guide you to the optimum solution.

FABRIC QUALITY

711

100% stretch fabric
Composition:
92% polyester/8% elastane



ULTIMATE STRETCH



WATER REPELLENT



Combi suit with kneepad-
and holster pockets,
four-way stretch
19169-711
see page 40



Combi suit with kneepad-
and holster pockets,
four-way stretch
19069-711
see page 40



Trousers with kneepad
pockets and holster
pockets, four-way stretch
19031-711
see page 37



Trousers with kneepad
pockets and holster
pockets, four-way stretch
19131-711
see page 38

FABRIC QUALITY

511

100% stretch fabric,
suitable for industrial
washing
Composition:
88% polyester/
12% elastolefin

ProWash®



ULTIMATE STRETCH



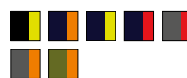
WATER REPELLENT



Trousers with kneepad
pockets, four-way stretch
19079-511
see page 16



Trousers with kneepad
pockets, ladies fit
DIAMOND, four-way
stretch
19078-511
see page 21



Trousers with kneepad
pockets, four-way stretch
19179-511
see page 23



Trousers with kneepad
pockets, ladies fit
DIAMOND, four-way
stretch
19178-511
see page 25

FABRIC QUALITY

236

Light fabric with stretch
zones
Composition:
70% polyester/30% cotton

ProWash®



STRETCH ZONES



LIGHTWEIGHT



Boilersuit with kneepad
pockets, stretch inserts
19519-236
see page 63



Bib & Brace with kneepad
pockets, stretch inserts
19569-236
see page 59



Bib & Brace with kneepad
pockets, stretch inserts
19669-236
see page 61



Trousers with kneepad
pockets, stretch inserts
19579-236
see page 54



Trousers with kneepad pockets, four-way stretch
19479-711
see page 45



Trousers with kneepad pockets, four-way stretch
19879-711
see page 45



¾ length trousers with kneepad pockets and holster pockets, four-way stretch
19049-711
see page 49



Shorts, long, with holster pockets, four-way stretch
19349-711
see page 46



Skirt, ladies fit DIAMOND, four-way stretch
19244-711
see page 49

FABRIC QUALITY

510

100% stretch fabric, extra lightweight, suitable for industrial washing
Composition: 83% recycled polyester/17% elastofin

ProWash®



ULTIMATE STRETCH



WATER REPELLENT



LIGHTWEIGHT



RECYCLED POLYESTER



Trousers with kneepad pockets, four-way stretch
19279-510
see page 26



Trousers with thigh pockets, four-way stretch
19379-510
see page 29



Shorts, long, four-way stretch
19249-510
see page 18



Shorts, long, ladies fit DIAMOND, four-way stretch
19248-510
see page 33



Trousers with kneepad pockets, ladies fit DIAMOND, stretch inserts
19578-236
see page 56



Trousers with kneepad pockets, stretch inserts
19679-236
see page 50



Trousers with kneepad pockets, ladies fit DIAMOND, stretch inserts
19678-236
see page 52

FABRIC QUALITY

449

Lightweight fabric, light stretch
Composition: 100% polyester



WATERPROOF



WINDPROOF



BREATHABLE



LIGHTWEIGHT



Winter Trousers with kneepad pockets, CLIMASCOT®-lining
19090-449
see page 74



Over trousers with lightweight lining, waterproof
19590-449
see page 73

Tops for all weathers

From inner to outer layers. Get an overview of T-shirts, tops and jackets.



Parka with CLIMASCOT®-lining, lightweight
19030-449
see page 71



Winter jacket with CLIMASCOT®-lining
19335-231
see page 54



Winter jacket with CLIMASCOT®-lining
19435-231
see page 54



Winter jacket CLIMASCOT®-lining, lightweight
19035-449
see page 74



Winter jacket CLIMASCOT®-lining, ladies fit, lightweight
19045-449
see page 56



Outer shell jacket with lining, ladies fit, lightweight
19011-449
see page 73



Jacket, four-way stretch
19009-511
see page 23



Jacket, ladies fit, four-way stretch
19008-511
see page 20



Jacket, stretch inserts
19509-236
see page 58



Sweatshirt, modern fit
19084-781
see page 37



Sweatshirt with zipper, modern fit
19184-781
see page 26



Hoodie with zipper, modern fit
19284-781
see page 50



Knitted Jumper with half zip
19005-351
see page 38



T-shirt, ladies fit
19092-771
see page 32



T-shirt, modern fit
19082-771
see page 30



Polo Shirt, ladies fit
19093-771
see page 49



Polo Shirt, modern fit
19083-771
see page 34



T-shirt, long-sleeved, ladies fit
19091-771
see page 52



Outer shell jacket with
lining, lightweight
19001-449
see page 72



Outer Shell Jacket with
lightweight lining,
waterproof
19301-231
see page 68



Softshell Jacket with
reflectors
19202-291
see page 66



Softshell Jacket with
reflectors, ladies fit
19212-291
see page 66



Softshell Jacket,
breathable, windproof
and water-repellent
19002-143
see page 28



Softshell Jacket, ladies
fit, breathable, windproof
and water-repellent
19012-143
see page 69



Fleece jumper with half
zip, ladies fit
19353-316
see page 65



Fleece jumper with
half zip
19303-316
see page 65



Fleece Jumper with
zipper, ladies fit
19453-316
see page 64



Fleece Jumper with zipper
19403-316
see page 64



Fleece Jumper with
zipper, ladies fit
19153-315
see page 24



Fleece Jumper with zipper
19103-315
see page 46



T-shirt, long-sleeved,
modern fit
19081-771
see page 61



Tool Vest, four-way
stretch
19589-711
see page 45



T-shirt with print,
modern fit
19182-965
see page 49



14010



1418



1433



1444



17010



1709



1744



22210



22218

ULTIMATE
STRETCH

LIGHTWEIGHT



WATER REPELLENT

ERGONOMIC
FITKNEE PAD
POCKETOEKO-TEX®
CONFIDENCE IN TEXTILES
STANDARD 100
5548 Shirley
Tested for harmful substances.
www.oeko-tex.com/standard100**CORDURA**
F A B R I C

ProWash®

EN ISO 20471
class 2**MASCOT® ACCELERATE SAFE | Trousers with kneepad pockets, four-way stretch****Product number: 19079-511**

88% polyester/12% elastofin - 275 g/m²

Hi-Vis Group Y. Certified to EN ISO 20471 - class 2. The product is certified with maximum 0,0400 m² (76 cm) - 0,0300 m² (82+90 cm) logo area. This approved area must not be exceeded. Logo on, respectively, front or back of the product can constitute only a maximum of 50% of the total approved logo area in order to maintain the EN ISO 20471-certification.

Leg length and size: 76 cm: C 46-C 58 • 82 cm: C 44-C 68 • 90 cm: C 46-C 62

- Four way stretch material provides unique freedom of movement and comfort.
- The water-repellent multifunctional stretch material combines a low weight with a very high durability.
- The product tolerates industrial washing.
- Effective ventilation to the leg via the zip on the back of the thigh.
- Ruler pocket with Kevlar® reinforcement - particularly resistant to pointed and sharp objects.
- The kneepad pockets of durable CORDURA® are adjustable so the kneepads have the optimal position on your knees.
- Prepared for holster pockets 19450-126, which are attached with buttons.
- Co-certified for use with MASCOT kneepad type SHORT or LONG, as the kneepad pocket is height-adjustable.

Fabric 511

Fabric 511 combines superior multi-directional elastic properties with industrial washability.

ULTIMATE
STRETCH
WORKWEAR



ULTIMATE STRETCH

WORKWEAR

Flexible kneepad pockets with high wear resistance

The kneepad pockets are made from a very durable CORDURA®, which is tested to be seven times stronger than cotton. The kneepads are easily inserted at the bottom, and the height at which they are placed is adjustable.

Elastic stretch fabric which is suitable for industrial washing

The stretch fabric has been developed using the most advanced elastic fibres on the market. This means the product not only has an extraordinary amount of stretch, but also tolerates industrial washing at 60 degrees. The ProWash® label is your guarantee that the product is suitable for industrial washing and drying.

Many spacious pockets

The trousers' spacious pockets also have room for plenty of tools. Tools can be distributed across the front pockets, back pockets, thigh pocket, the Kevlar®-reinforced sliding rule pocket, and front-thigh pockets with flaps. The pocket flaps, which often dirty easily, are dirt-repellent. The thigh pocket comes with a lined telephone pocket, hidden press stud fastening and detachable ID card holder. The concealed hammer loop on the right side is an added detail. The pockets are fully integrated in the design. And thanks to the stretch fabric, you can fill the pockets without losing freedom of movement.

Stretch material that follows all body movements

The stretch material is flexible in all directions providing a unique freedom of movement with nothing that tightens or bothers. The water-repellent multifunctional stretch material combines low weight with very high durability. The flexible material feels soft and comfortable - almost like a second skin.

Certified visibility and safety

Approved according to the international norm EN ISO 20471 that imposes requirements on visible workwear for employees in high-risk areas. The fluorescent material keeps you visible in daylight and the reflectors with the highest reflectivity make you visible in the dark.





14010



1418



1433



17010



1709



1744



22210



ProWash® 

MASCOT® ACCELERATE SAFE | Jacket, ladies fit, four-way stretch

Product number: 19008-511

88% polyester/12% elastolefin - 275 g/m²

Hi-Vis Group B. Certified to EN ISO 20471 - class 2. The product is certified with maximum 0,1000 m² (XS-5XL) logo area. This approved area must not be exceeded. Logo on, respectively, front or back of the product can constitute only a maximum of 50% of the total approved logo area in order to maintain the EN ISO 20471-certification.

Size: S-5XL

- Specially designed and fitted for women.
- Four way stretch material provides unique freedom of movement and comfort.
- The water-repellent multifunctional stretch material combines a low weight with a very high durability.
- The product tolerates industrial washing.
- Fastening with zip and internal storm flap, so the wind is kept out.
- Extra visibility with the help of oblique, transverse reflective strips.



14010



1418



1433



17010



1709



1744



22210



CORDURA®
F A B R I C

ProWash®



MASCOT® ACCELERATE SAFE | Trousers with kneepad pockets, ladies fit DIAMOND, four-way stretch

Product number: 19078-511

88% polyester/12% elastolefin - 275 g/m²

Hi-Vis Group Y. Certified to EN ISO 20471 - class 2. The product is certified with maximum 0,0200 m² (76 cm) - 0,0200 m² (82 cm) logo area. This approved area must not be exceeded. Logo on, respectively, front or back of the product can constitute only a maximum of 50% of the total approved logo area in order to maintain the EN ISO 20471-certification.

Leg length and size: 76 cm: C 34-C 56 • 82 cm: C 34-C 56

- Diamond fit is especially designed for women with a difference of more than 20 centimetres between their waist and hip measurements.
- Four way stretch material provides unique freedom of movement and comfort.
- The water-repellent multifunctional stretch material combines a low weight with a very high durability.
- The product tolerates industrial washing.
- Ruler pocket with Kevlar® reinforcement - particularly resistant to pointed and sharp objects.
- The kneepad pockets of durable CORDURA® are adjustable so the kneepads have the optimal position on your knees.
- Effective ventilation to the leg via the zip on the back of the thigh.
- Prepared for holster pockets 19450-126, which are attached with buttons.
- Co-certified for use with MASCOT kneepad type SHORT or LONG, as the kneepad pocket is height-adjustable.

Need some extra pockets?

If you need an extra pocket for your tools, then the loose holster pockets 19450-126 are a great solution for your existing trousers. The pockets are attached with buttons.



CORDURA®
F A B R I C

MASCOT® COMPLETE | Holster pockets, CORDURA® fabric reinforcements

Product number: **19450-126**

100% polyester - 190 g/m²

One size

- CORDURA® reinforcements on part of the product.
- Attaches with buttons.
- Measures 20 x 24 cm.
- Suitable for use with certain MASCOT® ACCELERATE SAFE bottoms.



14010



1418



1433



1444



17010



1709



1744



22210



22218



01014



01017



10222



0917



1814



18222



3314



CORDURA®
F A B R I C

ProWash®

EN ISO 20471
1



ProWash®

EN ISO 20471
2

MASCOT® ACCELERATE SAFE | Jacket, four-way stretch

Product number: **19009-511**

88% polyester/12% elastolefin - 275 g/m²

Hi-Vis Group A. Certified to EN ISO 20471 - class 2. The product is certified with maximum 0,3300 m² (S-5XL) logo area. This approved area must not be exceeded. Logo on, respectively, front or back of the product can constitute only a maximum of 50% of the total approved logo area in order to maintain the EN ISO 20471-certification.

Size: S-5XL

- Four way stretch material provides unique freedom of movement and comfort.
- The water-repellent multifunctional stretch material combines a low weight with a very high durability.
- The product tolerates industrial washing.
- Fastening with zip and internal storm flap, so the wind is kept out.
- Extra visibility with the help of oblique, transverse reflective strips.

MASCOT® ACCELERATE SAFE | Trousers with kneepad pockets, four-way stretch

Product number: **19179-511**

88% polyester/12% elastolefin - 275 g/m²

Hi-Vis Group Z. Certified to EN ISO 20471 - class 1. The product is certified with maximum 0,0300 m² logo area. This approved area must not be exceeded. Logo on, respectively, front or back of the product can constitute only a maximum of 50% of the total approved logo area in order to maintain the EN ISO 20471-certification.

Leg length and size: 76 cm: C 46-C 58 • 82 cm: C 44-C 68 • 90 cm: C 46-C 62

- Four way stretch material provides unique freedom of movement and comfort.
- The water-repellent multifunctional stretch material combines a low weight with a very high durability.
- The product tolerates industrial washing.
- Effective ventilation to the leg via the zip on the back of the thigh.
- Ergonomically shaped trouser legs are constructed to follow the body's natural movements.
- The kneepad pockets of durable CORDURA® are adjustable so the kneepads have the optimal position on your knees.
- Prepared for holster pockets 19450-126, which are attached with buttons.
- Co-certified for use with MASCOT kneepad type SHORT or LONG, as the kneepad pocket is height-adjustable.



14010

1418

1433



17010

1709

1744



22210



MASCOT® ACCELERATE SAFE | Fleece Jumper with zipper, ladies fit

Product number: **19153-315**

94% polyester/6% elastane - 260 g/m²

Hi-Vis Group B. Certified to EN ISO 20471 - class 2 (XS = class 1) The product is certified with maximum 0,4800 m² (XS) - 0,1500 m² (S-5XL) logo area. This approved area must not be exceeded. Logo on, respectively, front or back of the product can constitute only a maximum of 50% of the total approved logo area in order to maintain the EN ISO 20471-certification.

Size: XS-5XL

- Specially designed and fitted for women.
- Fastening with zip and internal storm flap, so the wind is kept out.
- Front pockets with zippers for safe storage.
- Inside pockets.
- Detachable ID card holder.



01014

01017

10222

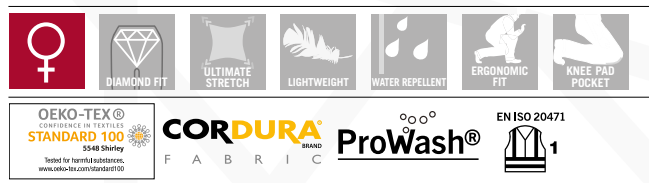
0917



1814

4417

3314



**MASCOT® ACCELERATE SAFE | Trousers with kneepad pockets, ladies fit
DIAMOND, four-way stretch**

Product number: 19178-511

88% polyester/12% elastolefin - 275 g/m²

Hi-Vis Group Z. Certified to EN ISO 20471 - class 1. The product is certified with maximum 0,0300 m² logo area. This approved area must not be exceeded. Logo on, respectively, front or back of the product can constitute only a maximum of 50% of the total approved logo area in order to maintain the EN ISO 20471-certification.

Leg length and size: 76 cm: C 34-C 56 • 82 cm: C 34-C 56

- Diamond fit is especially designed for women with a difference of more than 20 centimetres between their waist and hip measurements.
- Four way stretch material provides unique freedom of movement and comfort.
- The water-repellent multifunctional stretch material combines a low weight with a very high durability.
- The product tolerates industrial washing.
- The kneepad pockets of durable CORDURA® are adjustable so the kneepads have the optimal position on your knees.
- Effective ventilation to the leg via the zip on the back of the thigh.
- Prepared for holster pockets 19450-126, which are attached with buttons.
- Co-certified for use with MASCOT kneepad type SHORT or LONG, as the kneepad pocket is height-adjustable.



14010

1418

1433

1444

17010

1709

1744

22210

22218



PREMIUM



MASCOT® ACCELERATE SAFE | Sweatshirt with zipper, modern fit

Product number: **19184-781**

50% polyester/50% cotton - 260 g/m²

Hi-Vis Group A. Certified to EN ISO 20471 - class 3 (XS-S = class 2). Certified to EN 13758-2 UPF 40+. The product is certified with maximum 0,2300 m² (XS-S) - 0,0200 m² (M-5XL) logo area. This approved area must not be exceeded. Logo on, respectively, front or back of the product can constitute only a maximum of 50% of the total approved logo area in order to maintain the EN ISO 20471-certification.

Size: XS-5XL

- Fabric with polyester on one side for both wear resistance and colour fastness and cotton on the other side, for the sake of comfort.
- Modern, close fit with great freedom of movement.
- Extra freedom of movement with elastic reflectors.
- Front pockets with zippers for safe storage.
- Extra padding over the seam at the neck so the seam does not cause irritation.



14010

1418

17010



CORDURA
FABRIC

ProWash®



MASCOT® ACCELERATE SAFE | Trousers with kneepad pockets, four-way stretch

Product number: **19279-510**

83% recycled polyester/17% elastolefin - 205 g/m²

Hi-Vis Group Y. Certified to EN ISO 20471 - class 2. The product is certified with maximum 0,0400 m² (76 cm) - 0,0300 m² (82+90 cm) logo area. This approved area must not be exceeded. Logo on, respectively, front or back of the product can constitute only a maximum of 50% of the total approved logo area in order to maintain the EN ISO 20471-certification.

Leg length and size: 76 cm: C 46-C 58 • 82 cm: C 44-C 68 • 90 cm: C 46-C 62

- Four way stretch material provides unique freedom of movement and comfort.
- The water-repellent multifunctional stretch material combines a low weight with a very high durability.
- Ergonomically shaped trouser legs are constructed to follow the body's natural movements.
- Ruler pocket with Kevlar® reinforcement - particularly resistant to pointed and sharp objects.
- Effective ventilation to the leg via the zip on the back of the thigh.
- The kneepad pockets of durable CORDURA® are adjustable so the kneepads have the optimal position on your knees.
- Prepared for holster pockets 19450-126, which are attached with buttons.
- The product tolerates industrial washing.
- Co-certified for use with MASCOT kneepad type SHORT or LONG, as the kneepad pocket is height-adjustable.

Fabric 510

Fabric 510 is an ultra lightweight fabric type with excellent elastic properties that ensure freedom of movement and optimum comfort. The fabric is made from 83% recycled polyester, and tolerates industrial washing.



EcoLog

ULTIMATE
STRETCH
WORKWEAR



14010



1418



1433



1444



17010



1709



1744



22210



22218



BREATHABLE



WINDPROOF



WATER REPELLENT



MODERN FIT



MASCOT® ACCELERATE SAFE | Softshell Jacket, breathable, windproof and water-repellent

Product number: 19002-143

100% polyester - 330 g/m²

Hi-Vis Group A. Certified to EN ISO 20471 - class 2. The product is certified with maximum 0,3900 m² (S-5XL) logo area. This approved area must not be exceeded. Logo on, respectively, front or back of the product can constitute only a maximum of 50% of the total approved logo area in order to maintain the EN ISO 20471-certification.

Size: S-5XL

- Breathable, windproof and water-repellent.
- Modern, close fit with great freedom of movement.
- Fastening with waterproof zip and internal storm flap.
- Front pockets with waterproof zips.
- Adjustable elastic drawstring at waist.
- Detachable ID card holder.



01014

01017

0917

10222



CORDURA®
F A B R I C

ProWash®

EN ISO 20471
1

MASCOT® ACCELERATE SAFE | Trousers with thigh pockets, four-way stretch

Product number: **19379-510**

83% recycled polyester/17% elastolefin - 205 g/m²

Hi-Vis Group Z. Certified to EN ISO 20471 - class 1. The product is certified with maximum 0,0200 m² (76 cm) - 0,0500 m² (82+90 cm) logo area. This approved area must not be exceeded. Logo on, respectively, front or back of the product can constitute only a maximum of 50% of the total approved logo area in order to maintain the EN ISO 20471-certification.

Leg length and size: 76 cm: C 46-C 58 • 82 cm: C 44-C 68 • 90 cm: C 46-C 62

- Four way stretch material provides unique freedom of movement and comfort.
- The water-repellent multifunctional stretch material combines a low weight with a very high durability.
- Low waist with form-cut waistband ensures comfort and freedom of movement.
- Ergonomically shaped trouser legs are constructed to follow the body's natural movements.
- CORDURA® (1000 D) reinforcements on knee.
- As standard in three different leg lengths, so you can choose the best fit and optimal placement of details just for you.
- The product tolerates industrial washing.
- Co-certified for use with MASCOT kneepad type SHORT or LONG, as the kneepad pocket is height-adjustable.



Oeko-Tex® Standard 100

The Oeko-Tex® label is your guarantee that products have been checked for the content of hazardous substances. The Oeko-Tex® Standard 100 is an internationally recognised labelling system and the world's leading health label for textile products. The Oeko-Tex® label means that the products have been tested and approved for the content of hazardous or potentially hazardous chemicals and colourants.

This Oeko-Tex® label places strict demands on products – stricter even than those set by legislation. The label is awarded only after the product has been thoroughly tested and approved by an impartial party. Testing is carried out on all materials included in the product, which means not only the textiles but also any printed labels and accessories such as zips.



14010

1418

1433



14



17



222



1444



17010



1709



1744



22210



22218



EN ISO 20471

RECYCLED
POLYESTER

LIGHTWEIGHT



WATER REPELLENT

OEKO-TEX®
CONFIDENCE IN TEXTILES
STANDARD 100
5548 Shirley
Tested for harmful substances.
www.oeko-tex.com/standard100

ProWash®

MASCOT® ACCELERATE SAFE | Shorts, long, four-way stretch

Product number: **19249-510**

83% recycled polyester/17% elastolefin - 205 g/m²

Hi-Vis Group X. Certified to EN ISO 20471 - class 1 (C44-C46), class 2 (C47-C68). The product is certified with maximum 0,3200 m² (C44-C46) - 0,0000 m² (C47-C68) logo area. This approved area must not be exceeded. Logo on, respectively, front or back of the product can constitute only a maximum of 50% of the total approved logo area in order to maintain the EN ISO 20471-certification.

Leg length and size: 40.5 cm: C 44-C 68

- Four way stretch material provides unique freedom of movement and comfort.
- The water-repellent multifunctional stretch material combines a low weight with a very high durability.
- Low waist with form-cut waistband ensures comfort and freedom of movement.
- Ruler pocket with Kevlar® reinforcement - particularly resistant to pointed and sharp objects.
- The product tolerates industrial washing.



PREMIUM

OEKO-TEX®
CONFIDENCE IN TEXTILES
STANDARD 100
5548 Shirley
Tested for harmful substances.
www.oeko-tex.com/standard100

EN ISO 20471

EN ISO 20471
CLASS 2

MASCOT® ACCELERATE SAFE | T-shirt, modern fit

Product number: **19082-771**

50% polyester/50% cotton - 150 g/m²

Hi-Vis Group B. Certified to EN ISO 20471 - class 2. Certified to EN 13758-2 UPF 40+. The product is certified with maximum 0,0600 m² (S-5XL) logo area. This approved area must not be exceeded. Logo on, respectively, front or back of the product can constitute only a maximum of 50% of the total approved logo area in order to maintain the EN ISO 20471-certification.

Size: S-5XL

- Fabric with polyester on one side for both wear resistance and colour fastness and cotton on the other side, for the sake of comfort.
- Modern, close fit with great freedom of movement.
- Extra freedom of movement with elastic reflectors.
- Extra padding over the seam at the neck so the seam does not cause irritation.





14010



1418



1433



17010



1709



1744



22210



MASCOT® ACCELERATE SAFE | T-shirt, ladies fit

Product number: **19092-771**

50% polyester/50% cotton - 150 g/m²

Hi-Vis Group B. Certified to EN ISO 20471 - class 2 (XS = class 1) Certified to EN 13758-2 UPF 40+. The product is certified with maximum 0,3000 m² (XS) - 0,0000 m² (S-5XL) logo area. This approved area must not be exceeded. Logo on, respectively, front or back of the product can constitute only a maximum of 50% of the total approved logo area in order to maintain the EN ISO 20471-certification.

Size: XS-5XL

- Specially designed and fitted for women.
- Fabric with polyester on one side for both wear resistance and colour fastness and cotton on the other side, for the sake of comfort.
- Extra freedom of movement with elastic reflectors.
- Extra padding over the seam at the neck so the seam does not cause irritation.



14

17

222



ProWash®

EN ISO 20471
class 2

MASCOT® ACCELERATE SAFE | Shorts, long, ladies fit DIAMOND, four-way stretch

Product number: 19248-510

83% recycled polyester/17% elastolefin - 205 g/m²

Hi-Vis Group X. Certified to EN ISO 20471 - class 1 (C34-C38), class 2 (C40-C56). The product is certified with maximum 0,3300 m² (C34-C38) - 0,0400 m² (C40-C56) logo area. This approved area must not be exceeded. Logo on, respectively, front or back of the product can constitute only a maximum of 50% of the total approved logo area in order to maintain the EN ISO 20471-certification.

Leg length and size: 40-5 cm: C 34-C 56

- Diamond fit is especially designed for women with a difference of more than 20 centimetres between their waist and hip measurements.
- Four way stretch material provides unique freedom of movement and comfort.
- The water-repellent multifunctional stretch material combines a low weight with a very high durability.
- Low waist with form-cut waistband ensures comfort and freedom of movement.
- Ruler pocket with Kevlar® reinforcement - particularly resistant to pointed and sharp objects.
- The product tolerates industrial washing.



14010



1418



1433



1444



17010



1709



1744



22210



22218



PREMIUM



MASCOT® ACCELERATE SAFE | Polo Shirt, modern fit

Product number: **19083-771**

50% polyester/50% cotton - 150 g/m²

Hi-Vis Group B. Certified to EN ISO 20471 - class 2. Certified to EN 13758-2 UPF 40+. The product is certified with maximum 0,0800 m² (S-5XL) logo area. This approved area must not be exceeded. Logo on, respectively, front or back of the product can constitute only a maximum of 50% of the total approved logo area in order to maintain the EN ISO 20471-certification.

Size: S-5XL

- Fabric with polyester on one side for both wear resistance and colour fastness and cotton on the other side, for the sake of comfort.
- Modern, close fit with great freedom of movement.
- Extra freedom of movement with elastic reflectors.
- Extra padding over the seam at the neck so the seam does not cause irritation.



Fabric 711

Newly developed hi-vis, four-way stretch fabric with exceptional freedom of movement.

ULTIMATE
STRETCH WORKWEAR



14010



1418



1433



14010



1418



1433



1444



17010



1709



1444



17010



1709



1744



22210



22218



1744



22210



22218



PREMIUM



MASCOT® ACCELERATE SAFE | Sweatshirt, modern fit

Product number: **19084-781**

50% polyester/50% cotton - 260 g/m²

Hi-Vis Group A. Certified to EN ISO 20471 - class 3 (XS-S = class 2). Certified to EN 13758-2 UPF 40+. The product is certified with maximum 0,2400 m² (XS) - 0,0300 m² (M-5XL) logo area. This approved area must not be exceeded. Logo on, respectively, front or back of the product can constitute only a maximum of 50% of the total approved logo area in order to maintain the EN ISO 20471-certification.

Size: XS-5XL

- Fabric with polyester on one side for both wear resistance and colour fastness and cotton on the other side, for the sake of comfort.
- Modern, close fit with great freedom of movement.
- Extra freedom of movement with elastic reflectors.
- Extra padding over the seam at the neck so the seam does not cause irritation.



CORDURA®
FABRIC



MASCOT® ACCELERATE SAFE | Trousers with kneepad pockets and holster pockets, four-way stretch

Product number: **19031-711**

92% polyester/8% elastane - 265 g/m²

Hi-Vis Group Y. Certified to EN ISO 20471 - class 2. The product is certified with maximum 0,0500 m² logo area. This approved area must not be exceeded. Logo on, respectively, front or back of the product can constitute only a maximum of 50% of the total approved logo area in order to maintain the EN ISO 20471-certification.

Leg length and size: 76 cm: C 46-C 58 • 82 cm: C 44-C 68 • 90 cm: C 46-C 62

- Four way stretch material provides unique freedom of movement and comfort.
- The water-repellent multifunctional stretch material combines a low weight with a very high durability.
- Effective ventilation to the leg via the zip on the back of the thigh.
- Holster pockets with Kevlar® and CORDURA® fabric reinforcements.
- Detachable holster pockets.
- Ruler pocket with Kevlar® reinforcement - particularly resistant to pointed and sharp objects.
- Kneepad pockets in two-way stretch CORDURA® for extra freedom of movement when kneeling.
- Adjustable kneepad pockets so kneepads can be optimally placed on the knee.
- Co-certified for use with MASCOT kneepad type SHORT or LONG, as the kneepad pocket is height-adjustable.



14010

1418

17010



1709

22210



OEKO-TEX®
CONFIDENCE IN TEXTILES
STANDARD 100
5548 Shirley
Tested for harmful substances.
www.oeko-tex.com/standard100

EN ISO 20471
class 2

MASCOT® ACCELERATE SAFE | Knitted Jumper with half zip

Product number: **19005-351**

100% polyester - 380 g/m²

Hi-Vis Group A. Certified to EN ISO 20471 - class 2. The product is certified with maximum 0,3200 m² (S-5XL) logo area. This approved area must not be exceeded. Logo on, respectively, front or back of the product can constitute only a maximum of 50% of the total approved logo area in order to maintain the EN ISO 20471-certification.

Size: S-5XL

- Modern, close fit with great freedom of movement.
- Zipper at neck with storm flap.
- Front pockets with zippers for safe storage.
- Detachable ID card holder.



01014

01017

10222



0917

1814

18222



3314

4414

4417



OEKO-TEX®
CONFIDENCE IN TEXTILES
STANDARD 100
5548 Shirley
Tested for harmful substances.
www.oeko-tex.com/standard100

CORDURA®
F A B R I C

EN ISO 20471
class 1

MASCOT® ACCELERATE SAFE | Trousers with kneepad pockets and holster pockets, four-way stretch

Product number: **19131-711**

92% polyester/8% elastane - 265 g/m²

Hi-Vis Group Z. Certified to EN ISO 20471 - class 1. The product is certified with maximum 0,0400 m² logo area. This approved area must not be exceeded. Logo on, respectively, front or back of the product can constitute only a maximum of 50% of the total approved logo area in order to maintain the EN ISO 20471-certification.

Leg length and size: 76 cm: C 46-C 58 • 82 cm: C 44-C 68 • 90 cm: C 46-C 62

- Four way stretch material provides unique freedom of movement and comfort.
- The water-repellent multifunctional stretch material combines a low weight with a very high durability.
- Holster pockets with Kevlar® and CORDURA® fabric reinforcements.
- Detachable holster pockets.
- Effective ventilation to the leg via the zip on the back of the thigh.
- Ruler pocket with Kevlar® reinforcement - particularly resistant to pointed and sharp objects.
- Kneepad pockets in two-way stretch CORDURA® for extra freedom of movement when kneeling.
- Adjustable kneepad pockets so kneepads can be optimally placed on the knee.
- Co-certified for use with MASCOT kneepad type SHORT or LONG, as the kneepad pocket is height-adjustable.





0917



CORDURA
F A B R I C



MASCOT® ACCELERATE SAFE | Combi suit with kneepad- and holster pockets, four-way stretch

Product number: 19169-711

92% polyester/8% elastane - 265 g/m²

Hi-Vis Group Y. Certified to EN ISO 20471 - class 1. The product is certified with maximum 0,0200 m² (76 cm) - 0,0500 m² (82+90 cm) logo area. This approved area must not be exceeded. Logo on, respectively, front or back of the product can constitute only a maximum of 50% of the total approved logo area in order to maintain the EN ISO 20471-certification.

Leg length and size: 76 cm: C 46-C 58 • 82 cm: C 44-C 68 • 90 cm: C 46-C 62

- Four way stretch material provides unique freedom of movement and comfort.
- The water-repellent multifunctional stretch material combines a low weight with a very high durability.
- Holster pockets with Kevlar® and CORDURA® fabric reinforcements.
- Detachable holster pockets.
- Ruler pocket with Kevlar® reinforcement - particularly resistant to pointed and sharp objects.
- Effective ventilation to the leg via the zip on the back of the thigh.
- Kneepad pockets in two-way stretch CORDURA® for extra freedom of movement when kneeling.
- Adjustable kneepad pockets so kneepads can be optimally placed on the knee.
- Co-certified for use with MASCOT kneepad type SHORT or LONG, as the kneepad pocket is height-adjustable.



1709



CORDURA
F A B R I C



MASCOT® ACCELERATE SAFE | Combi suit with kneepad- and holster pockets, four-way stretch

Product number: 19069-711

92% polyester/8% elastane - 265 g/m²

Hi-Vis Group Y. Certified to EN ISO 20471 - class 2. The product is certified with maximum 0,2200 m² logo area. This approved area must not be exceeded. Logo on, respectively, front or back of the product can constitute only a maximum of 50% of the total approved logo area in order to maintain the EN ISO 20471-certification.

Leg length and size: 76 cm: C 46-C 58 • 82 cm: C 44-C 68 • 90 cm: C 46-C 62

- Four way stretch material provides unique freedom of movement and comfort.
- The water-repellent multifunctional stretch material combines a low weight with a very high durability.
- Holster pockets with Kevlar® and CORDURA® fabric reinforcements.
- Detachable holster pockets.
- Ruler pocket with Kevlar® reinforcement - particularly resistant to pointed and sharp objects.
- Effective ventilation to the leg via the zip on the back of the thigh.
- Kneepad pockets in two-way stretch CORDURA® for extra freedom of movement when kneeling.
- Adjustable kneepad pockets so kneepads can be optimally placed on the knee.
- Co-certified for use with MASCOT kneepad type SHORT or LONG, as the kneepad pocket is height-adjustable.

Individual adjustment

The combi suit has many features, and is therefore easy to adjust to suit personal preference. The shoulder straps are adjustable to ensure both a great fit and that the pockets on the top and legs sit where they should. The outer leg has a detachable button for attaching a knife holder, and the thigh pocket has an integrated and detachable ID-card holder.

Many spacious pockets

The combi suit's many spacious pockets have room for plenty of tools. Distribute your tools across the Kevlar® and CORDURA®-reinforced detachable holster pockets, front pockets, back pockets, thigh pocket, front-thigh pockets with flaps, ruler pocket and breast pocket. In addition, the vertical zip on the back thigh allows for ventilation to the legs and back.

Flexible kneepad pockets with high wear resistance

The kneepad pockets are adjustable and made from a special two-way CORDURA® stretch fabric, which is proven to be seven times stronger than cotton. The kneepads are inserted from the bottom.

High level of comfort and wear resistance

The stretch fabric is elastic in all directions, which provides unique freedom of movement where nothing restricts or irritates. The multifunctional fabric combines a low weight with a very high wear resistance, while also being water-repellent. Thanks to the soft back and the flexible fabric, you will barely notice the combi suit against your skin.

Certified visibility and safety

Approved according to the international norm EN ISO 20471 that imposes requirements on visible workwear for employees in high-risk areas. The fluorescent material keeps you visible in daylight and the reflectors with the highest reflectivity make you visible in the dark.



ULTIMATE
STRETCH 
WORKWEAR





14010

17010

1709

22210



CORDURA
F A B R I C

EN ISO 20471
1

MASCOT® ACCELERATE SAFE | Tool Vest, four-way stretch

Product number: **19589-711**

92% polyester/8% elastane - 265 g/m²

Hi-Vis Group C. Certified to EN ISO 20471 - class 1. The product is certified with maximum 0,2500 m² (S/L/2XL) logo area. This approved area must not be exceeded. Logo on, respectively, front or back of the product can constitute only a maximum of 50% of the total approved logo area in order to maintain the EN ISO 20471-certification.

Size: S, L & 2XL

- Four way stretch material provides unique freedom of movement and comfort.
- The water-repellent multifunctional stretch material combines a low weight with a very high durability.
- Holster pockets with Kevlar® and CORDURA® fabric reinforcements.
- Detachable holster pockets.
- Tool straps on both sides.
- Ventilation in the back.



01017



0917



CORDURA
F A B R I C

EN ISO 20471
1

MASCOT® ACCELERATE SAFE | Trousers with kneepad pockets, four-way stretch

Product number: **19879-711**

92% polyester/8% elastane - 265 g/m²

Hi-Vis Group Z. Certified to EN ISO 20471 - class 1. The product is certified with maximum 0,0300 m² (76 cm) - 0,0500 m² (82+90 cm) logo area. This approved area must not be exceeded. Logo on, respectively, front or back of the product can constitute only a maximum of 50% of the total approved logo area in order to maintain the EN ISO 20471-certification.

Leg length and size: 76 cm: C 46-C 58 • 82 cm: C 44-C 68 • 90 cm: C 46-C 62

- Four way stretch material provides unique freedom of movement and comfort.
- The water-repellent multifunctional stretch material combines a low weight with a very high durability.
- Low waist with form-cut waistband ensures comfort and freedom of movement.
- Ergonomically shaped trouser legs are constructed to follow the body's natural movements.
- Reinforced ruler pocket.
- The kneepad pockets of durable CORDURA® are adjustable so the kneepads have the optimal position on your knees.
- Prepared for holster pockets 19450-126, which are attached with buttons.
- Co-certified for use with MASCOT kneepad type SHORT or LONG, as the kneepad pocket is height-adjustable.



14010



17010



1709



CORDURA
F A B R I C

EN ISO 20471
2

MASCOT® ACCELERATE SAFE | Trousers with kneepad pockets, four-way stretch

Product number: **19479-711**

92% polyester/8% elastane - 265 g/m²

Hi-Vis Group Y. Certified to EN ISO 20471 - class 2. The product is certified with maximum 0,0700 m² (76 cm) - 0,1000 m² (82+90 cm) logo area. This approved area must not be exceeded. Logo on, respectively, front or back of the product can constitute only a maximum of 50% of the total approved logo area in order to maintain the EN ISO 20471-certification.

Leg length and size: 76 cm: C 46-C 58 • 82 cm: C 44-C 68 • 90 cm: C 46-C 62

- Four way stretch material provides unique freedom of movement and comfort.
- The water-repellent multifunctional stretch material combines a low weight with a very high durability.
- Low waist with form-cut waistband ensures comfort and freedom of movement.
- Ergonomically shaped trouser legs are constructed to follow the body's natural movements.
- Reinforced ruler pocket.
- The kneepad pockets of durable CORDURA® are adjustable so the kneepads have the optimal position on your knees.
- Prepared for holster pockets 19450-126, which are attached with buttons.
- Co-certified for use with MASCOT kneepad type SHORT or LONG, as the kneepad pocket is height-adjustable.



MASCOT® ACCELERATE SAFE | Fleece Jumper with zipper

Product number: **19103-315**

94% polyester/6% elastane - 260 g/m²

Hi-Vis Group A. Certified to EN ISO 20471 - class 2. The product is certified with maximum 0,2900 m² (S-4XL) logo area. This approved area must not be exceeded. Logo on, respectively, front or back of the product can constitute only a maximum of 50% of the total approved logo area in order to maintain the EN ISO 20471-certification.

Size: S-5XL

- Modern, close fit with great freedom of movement.
- Fastening with zip and internal storm flap, so the wind is kept out.
- Front pockets with zippers for safe storage.
- Inside pockets.
- Detachable ID card holder.



CORDURA®
F A B R I C



MASCOT® ACCELERATE SAFE | Shorts, long, with holster pockets, four-way stretch

Product number: **19349-711**

92% polyester/8% elastane - 265 g/m²

Hi-Vis Group X. Certified to EN ISO 20471 - class 2 (C47-C68), class 1 (C44-C46). The product is certified with maximum 0,3500 m² (C44-C46) - 0,0400 m² (C47-C68) logo area. This approved area must not be exceeded. Logo on, respectively, front or back of the product can constitute only a maximum of 50% of the total approved logo area in order to maintain the EN ISO 20471-certification.

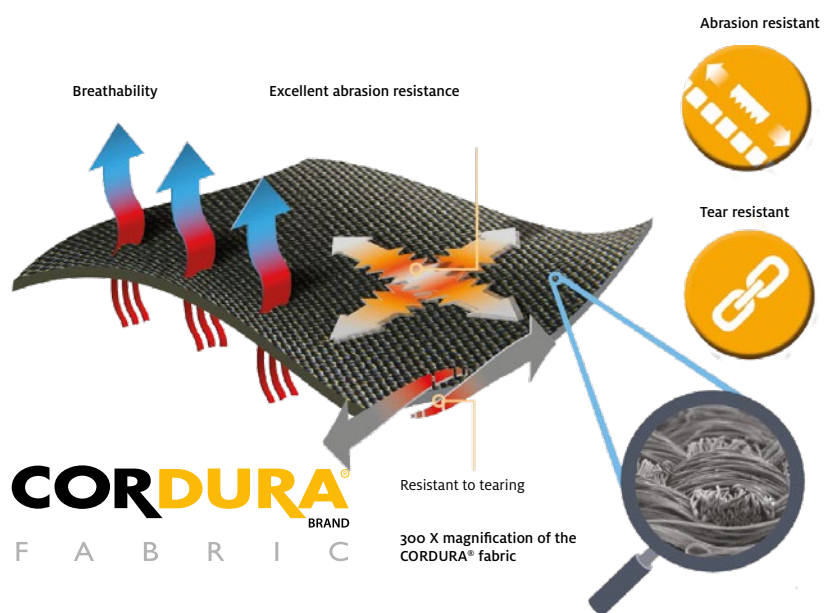
Leg length and size: 40.5 cm: C 44-C 68

- Four way stretch material provides unique freedom of movement and comfort.
- The water-repellent multifunctional stretch material combines a low weight with a very high durability.
- Low waist with form-cut waistband ensures comfort and freedom of movement.
- Holster pockets with Kevlar® and CORDURA® fabric reinforcements.
- Detachable holster pockets.
- Ruler pocket with Kevlar® reinforcement - particularly resistant to pointed and sharp objects.



CORDURA® fabric for everyday wear and tear

High durability is crucial when you are working at a fast pace. Holster pockets and ruler pockets have to stand the pressure when tools, nails and screws are taken in and out of the pockets countless times throughout the day. MASCOT ensures durability by using lots of CORDURA® fabric on all the exposed places, such as kneepad pockets, holster pockets and ruler pockets. CORDURA® fabric is in fact seven times stronger than cotton. We use both 1000D CORDURA® and the lighter 500D CORDURA®.







0814

0817

08222



BASIC



MASCOT® ACCELERATE SAFE | T-shirt with print, modern fit

Product number: **19182-965**

100% cotton - 175 g/m²

Size: S-5XL

- Modern, close fit with great freedom of movement.
- Ribbed neck.
- Extra padding over the seam at the neck so the seam does not cause irritation.



14010

17010

1709

22210



CORDURA®
F A B R I C



MASCOT® ACCELERATE SAFE | ¾ length trousers with kneepad pockets and holster pockets, four-way stretch

Product number: **19049-711**

92% polyester/8% elastane - 265 g/m²

Hi-Vis Group X. Certified to EN ISO 20471 - class 1. The product is certified with maximum 0,2700 m² (59 cm) logo area. This approved area must not be exceeded. Logo on, respectively, front or back of the product can constitute only a maximum of 50% of the total approved logo area in order to maintain the EN ISO 20471-certification.

Leg length and size: 59 cm: C 44-C 68

- Four way stretch material provides unique freedom of movement and comfort.
- The water-repellent multifunctional stretch material combines a low weight with a very high durability.
- Holster pockets with Kevlar® and CORDURA® fabric reinforcements.
- Detachable holster pockets.
- Ruler pocket with Kevlar® reinforcement - particularly resistant to pointed and sharp objects.
- Kneepad pockets in two-way stretch CORDURA® for extra freedom of movement when kneeling.
- An opening in the kneepad pocket allows for ventilation to the knee.
- Co-certified for use with MASCOT kneepad type, SHORT.



14010

1418

1433



17010



1709



1744



22210



PREMIUM



MASCOT® ACCELERATE SAFE | Polo Shirt, ladies fit

Product number: **19093-771**

50% polyester/50% cotton - 150 g/m²

Hi-Vis Group B. Certified to EN ISO 20471 - class 2 (XS = class 1) Certified to EN 13758-2 UPF 40+. The product is certified with maximum 0,2900 m² (XS) - 0,0000 m² (S-5XL) logo area. This approved area must not be exceeded. Logo on, respectively, front or back of the product can constitute only a maximum of 50% of the total approved logo area in order to maintain the EN ISO 20471-certification.

Size: XS-5XL

- Specially designed and fitted for women.
- Fabric with polyester on one side for both wear resistance and colour fastness and cotton on the other side, for the sake of comfort.
- Extra freedom of movement with elastic reflectors.
- Extra padding over the seam at the neck so the seam does not cause irritation.



14



17



222



MASCOT® ACCELERATE SAFE | Skirt, ladies fit DIAMOND, four-way stretch

Product number: **19244-711**

92% polyester/8% elastane - 265 g/m²

Hi-Vis Group X. Certified to EN ISO 20471 - class 1. The product is certified with maximum 0,3000 m² logo area. This approved area must not be exceeded. Logo on, respectively, front or back of the product can constitute only a maximum of 50% of the total approved logo area in order to maintain the EN ISO 20471-certification.

Length and size: 58 cm: C 34-C 56

- Diamond fit is especially designed for women with a difference of more than 20 centimetres between their waist and hip measurements.
- Four way stretch material provides unique freedom of movement and comfort.
- The water-repellent multifunctional stretch material combines a low weight with a very high durability.
- Ruler pocket with Kevlar® reinforcement - particularly resistant to pointed and sharp objects.



14010

1418

1433

1444



17010

1709

1744

22210

22218



PREMIUM



MASCOT® ACCELERATE SAFE | Hoodie with zipper, modern fit

Product number: **19284-781**

50% polyester/50% cotton - 260 g/m²

Hi-Vis Group A. Certified to EN ISO 20471 - class 3 (XS-S = class 2). Certified to EN 13758-2 UPF 40+. The product is certified with maximum 0,2400 m² (XS-S) - 0,0300 m² (M-5XL) logo area. This approved area must not be exceeded. Logo on, respectively, front or back of the product can constitute only a maximum of 50% of the total approved logo area in order to maintain the EN ISO 20471-certification.

Size: XS-5XL

- Fabric with polyester on one side for both wear resistance and colour fastness and cotton on the other side, for the sake of comfort.
- Modern, close fit with great freedom of movement.
- Extra freedom of movement with elastic reflectors.
- Front pockets with zippers for safe storage.
- Extra padding over the seam at the neck so the seam does not cause irritation.



01014

01017

10222

1814



CORDURA®
F A B R I C

ProWash®



MASCOT® ACCELERATE SAFE | Trousers with kneepad pockets, stretch inserts

Product number: **19679-236**

70% polyester/30% cotton - 215 g/m²

Hi-Vis Group Z. Certified to EN ISO 20471 - class 1. The product is certified with maximum 0,0300 m² (76 cm) - 0,0500 m² (82+90 cm) logo area. This approved area must not be exceeded. Logo on, respectively, front or back of the product can constitute only a maximum of 50% of the total approved logo area in order to maintain the EN ISO 20471-certification.

Leg length and size: 76 cm: C 46-C 58 • 82 cm: C 44-C 68 • 90 cm: C 46-C 62

- Light and strong fabric with ripstop. Ripstop is a super durable weave that helps fabric to last for a very long time.
- The product is a combination of regular fabric and stretch fabric, with the stretch fabric placed where extra freedom of movement is required.
- Low waist with form-cut waistband ensures comfort and freedom of movement.
- Ergonomically shaped trouser legs are constructed to follow the body's natural movements.
- The kneepad pockets of durable CORDURA® are adjustable so the kneepads have the optimal position on your knees.
- As standard in three different leg lengths, so you can choose the best fit and optimal placement of details just for you.
- Prepared for holster pockets 19450-126, which are attached with buttons.
- Co-certified for use with MASCOT kneepad type SHORT or LONG, as the kneepad pocket is height-adjustable.
- The product tolerates industrial washing.

Fabric 236

Fabric 236 combines a very low weight with stretch zones. Products in this fabric are extremely light, of premium quality and have excellent wear resistance.





14010

1418

1433



17010

1709

1744



22210



MASCOT® ACCELERATE SAFE | T-shirt, long-sleeved, ladies fit

Product number: **19091-771**

50% polyester/50% cotton - 150 g/m²

Hi-Vis Group B. Certified to EN ISO 20471 - class 2. Certified to EN 13758-2 UPF 40+. The product is certified with maximum 0,0700 m² (XS-5XL) logo area. This approved area must not be exceeded. Logo on, respectively, front or back of the product can constitute only a maximum of 50% of the total approved logo area in order to maintain the EN ISO 20471-certification.

Size: XS-5XL

- Specially designed and fitted for women.
- Fabric with polyester on one side for both wear resistance and colour fastness and cotton on the other side, for the sake of comfort.
- Extra freedom of movement with elastic reflectors.
- Extra padding over the seam at the neck so the seam does not cause irritation.



01014

01017

10222

1814



MASCOT® ACCELERATE SAFE | Trousers with kneepad pockets, ladies fit DIAMOND, stretch inserts

Product number: **19678-236**

70% polyester/30% cotton - 215 g/m²

Hi-Vis Group Z. Certified to EN ISO 20471 - class 1. The product is certified with maximum 0,0200 m² (76 cm) - 0,0500 m² (82 cm) logo area. This approved area must not be exceeded. Logo on, respectively, front or back of the product can constitute only a maximum of 50% of the total approved logo area in order to maintain the EN ISO 20471-certification.

Leg length and size: 76 cm: C 34-C 56 • 82 cm: C 34-C 56

- Diamond fit is especially designed for women with a difference of more than 20 centimetres between their waist and hip measurements.
- Light and strong fabric with ripstop. Ripstop is a super durable weave that helps fabric to last for a very long time.
- The product is a combination of regular fabric and stretch fabric, with the stretch fabric placed where extra freedom of movement is required.
- Ergonomically shaped trouser legs are constructed to follow the body's natural movements.
- The kneepad pockets of durable CORDURA® are adjustable so the kneepads have the optimal position on your knees.
- Prepared for holster pockets 19450-126, which are attached with buttons.
- Co-certified for use with MASCOT kneepad type SHORT or LONG, as the kneepad pocket is height-adjustable.
- The product tolerates industrial washing.



Promote your business with your company name and logo

Be aware that there are special requirements for logo print and embroidery on fluorescent safety workwear.

When applying logo print or embroidery on fluorescent workwear with EN ISO 20471, special demands for the size of the logo must be met in order to maintain the safety certification. Safety workwear is certified and classified according to the product's area of fluorescent material. If this area is covered with a larger logo than allowed, the certification will no longer apply.

Naturally, it should be possible for your customers to see which company you represent, so a maximum logo area is specified for each product. Logos on, respectively, the front or back of the product can constitute only a maximum of 50% of the total approved logo area in order to maintain the EN ISO 20471-certification. See the options for logo application under each product.





14010

1418

1433



1444

17010

1709



1744

22210

22218



MASCOT® ACCELERATE SAFE | Winter jacket with CLIMASCOT®-lining

Product number: **19335-231**

100% polyester - 210 g/m²

Hi-Vis Group A. Certified to EN ISO 20471 - class 3 (S = class 2), EN 343 - class 4/1/X and EN 342:2017 - kl. 3/WP (2,258 clo). The product is certified with maximum 0,2500 m² (S) - 0,0200 m² (M-5XL) logo area. This approved area must not be exceeded. Logo on, respectively, front or back of the product can constitute only a maximum of 50% of the total approved logo area in order to maintain the EN ISO 20471-certification.

Size: S-5XL

- Breathable, wind and waterproof with taped seams.
- Unique CLIMASCOT® insulation provides warmth without bulk. Lightweight, soft CLIMASCOT® insulation takes up almost no space when compressed.
- Fastening with waterproof zip and internal storm flap.
- Chest pocket with waterproof zip.
- Front pockets with waterproof zips.
- Flap on back of jacket can be folded up for standard back length or released for extended back.



14010

17010

1709



MASCOT® ACCELERATE SAFE | Winter jacket with CLIMASCOT®-lining, breathable, wind and waterproof

Product number: **19435-231**

100% polyester - 210 g/m²

Certified to RIS-3279-TOM, ONLY colour 14 and EN ISO 20471 - class 3 and EN 342.

Size: XS-5XL

- Breathable, wind and waterproof with taped seams.
- Unique CLIMASCOT® insulation provides warmth without bulk. Lightweight, soft CLIMASCOT® insulation takes up almost no space when compressed.
- Detachable lined hood with adjustable elastic drawstring.
- Fastening with zip and internal storm flap, so the wind is kept out.
- Interior zipper at lower back for logo printing / embroidery.



14010

1418

17010

22210



MASCOT® ACCELERATE SAFE | Trousers with kneepad pockets, stretch inserts

Product number: **19579-236**

70% polyester/30% cotton - 215 g/m²

Hi-Vis Group Y. Certified to EN ISO 20471 - class 2. The product is certified with maximum 0,0100 m² (76 cm) - 0,0400 m² (82+90 cm) logo area. This approved area must not be exceeded. Logo on, respectively, front or back of the product can constitute only a maximum of 50% of the total approved logo area in order to maintain the EN ISO 20471-certification.

Leg length and size: 76 cm: C 46-C 58 • 82 cm: C 44-C 68 • 90 cm: C 46-C 62

- Light and strong fabric with ripstop. Ripstop is a super durable weave that helps fabric to last for a very long time.
- The product is a combination of regular fabric and stretch fabric, with the stretch fabric placed where extra freedom of movement is required.
- Low waist with form-cut waistband ensures comfort and freedom of movement.
- Ergonomically shaped trouser legs are constructed to follow the body's natural movements.
- The kneepad pockets of durable CORDURA® are adjustable so the kneepads have the optimal position on your knees.
- As standard in three different leg lengths, so you can choose the best fit and optimal placement of details just for you.
- Prepared for holster pockets 19450-126, which are attached with buttons.
- Co-certified for use with MASCOT kneepad type SHORT or LONG, as the kneepad pocket is height-adjustable.
- The product tolerates industrial washing.

CLIMASCOT®
Lightweight Insulation





14010



1418



1433



17010



1709



1744



22210



14010



1418



17010



22210



CLIMASCOT®
Lightweight Insulation

EN ISO 20471



EN 342



EN 343



MASCOT® ACCELERATE SAFE | Winter jacket CLIMASCOT®-lining, ladies fit, lightweight

Product number: 19045-449

100% polyester - 210 g/m²

Hi-Vis Group A. Certified to EN ISO 20471 - class 3 (XS-M = class 2), EN 343 - class 4/1/X and EN 342:2017- kl. 3/WP (2,01 clo). The product is certified with maximum 0,1500 m² (XS-M) - 0,0400 m² (L-5XL) logo area. This approved area must not be exceeded. Logo on, respectively, front or back of the product can constitute only a maximum of 50% of the total approved logo area in order to maintain the EN ISO 20471-certification.

Size: XS-5XL

- Specially designed and fitted for women.
- Unique CLIMASCOT® insulation provides warmth without bulk. Lightweight, soft CLIMASCOT® insulation takes up almost no space when compressed.
- Breathable, wind and waterproof with taped seams.
- Fastening with waterproof zip and internal storm flap.
- Chest pocket with waterproof zip.
- Front pockets with waterproof zips.
- Flap on back of jacket can be folded up for standard back length or released for extended back.



OEKO-TEX®
CONFIDENCE IN TEXTILES
STANDARD 100
5548 Shirley
Tested for harmful substances.
www.oeko-tex.com/standard100

CORDURA®
F A B R I C

ProWash®

EN ISO 20471

MASCOT® ACCELERATE SAFE | Trousers with kneepad pockets, ladies fit DIAMOND, stretch inserts

Product number: 19578-236

70% polyester/30% cotton - 215 g/m²

Hi-Vis Group Y. Certified to EN ISO 20471 - class 2. The product is certified with maximum 0,0100 m² (76 cm) - 0,0300 m² (82 cm) logo area. This approved area must not be exceeded. Logo on, respectively, front or back of the product can constitute only a maximum of 50% of the total approved logo area in order to maintain the EN ISO 20471-certification.

Leg length and size: 76 cm: C 34-C 56 • 82 cm: C 34-C 56

- Diamond fit is especially designed for women with a difference of more than 20 centimetres between their waist and hip measurements.
- Light and strong fabric with ripstop. Ripstop is a super durable weave that helps fabric to last for a very long time.
- The product is a combination of regular fabric and stretch fabric, with the stretch fabric placed where extra freedom of movement is required.
- Ergonomically shaped trouser legs are constructed to follow the body's natural movements.
- The kneepad pockets of durable CORDURA® are adjustable so the kneepads have the optimal position on your knees.
- Prepared for holster pockets 19450-126, which are attached with buttons.
- Co-certified for use with MASCOT kneepad type SHORT or LONG, as the kneepad pocket is height-adjustable.
- The product tolerates industrial washing.





14010



1418



17010



22210



MASCOT® ACCELERATE SAFE | Jacket, stretch inserts

Product number: **19509-236**

70% polyester/30% cotton - 215 g/m²

Hi-Vis Group A. Certified to EN ISO 20471 - class 2. The product is certified with maximum 0,2300 m² (S-5XL) logo area. This approved area must not be exceeded. Logo on, respectively, front or back of the product can constitute only a maximum of 50% of the total approved logo area in order to maintain the EN ISO 20471-certification.

Size: S-5XL

- Modern, close fit with great freedom of movement.
- The product is a combination of regular fabric and stretch fabric, with the stretch fabric placed where extra freedom of movement is required.
- Fastening with zip and internal storm flap, so the wind is kept out.
- D-ring for keys or ID cards.
- Zipped pockets.
- Elastic at the cuffs.



14010



1418



17010



22210



ProWash®
EN ISO 20471
class 2

MASCOT® ACCELERATE SAFE | Bib & Brace with kneepad pockets, stretch inserts

Product number: **19569-236**

70% polyester/30% cotton - 215 g/m²

Hi-Vis Group Y. Certified to EN ISO 20471 - class 2. The product is certified with maximum 0,1000 m² (76 cm) - 0,1600 m² (82+90 cm) logo area. This approved area must not be exceeded. Logo on, respectively, front or back of the product can constitute only a maximum of 50% of the total approved logo area in order to maintain the EN ISO 20471-certification.

Leg length and size: 76 cm: C 46-C 58 • 82 cm: C 44-C 68 • 90 cm: C 46-C 62

- Light and strong fabric with ripstop. Ripstop is a super durable weave that helps fabric to last for a very long time.
- The product is a combination of regular fabric and stretch fabric, with the stretch fabric placed where extra freedom of movement is required.
- Ergonomically shaped trouser legs are constructed to follow the body's natural movements.
- The kneepad pockets of durable CORDURA® are adjustable so the kneepads have the optimal position on your knees.
- As standard in three different leg lengths, so you can choose the best fit and optimal placement of details just for you.
- Co-certified for use with MASCOT kneepad type SHORT or LONG, as the kneepad pocket is height-adjustable.





14010

1418

1433



1444

17010

1709



1744

22210

22218



01014



01017



ProWash®



MASCOT® ACCELERATE SAFE | Bib & Brace with kneepad pockets, stretch inserts

Product number: **19669-236**

70% polyester/30% cotton - 215 g/m²

Hi-Vis Group Z. Certified to EN ISO 20471 - class 1. The product is certified with maximum 0,0500 m² (76 cm) - 0,0800 m² (82+90 cm) logo area. This approved area must not be exceeded. Logo on, respectively, front or back of the product can constitute only a maximum of 50% of the total approved logo area in order to maintain the EN ISO 20471-certification.

Leg length and size: 76 cm: C 46-C 58 • 82 cm: C 44-C 68 • 90 cm: C 46-C 62

- Light and strong fabric with ripstop. Ripstop is a super durable weave that helps fabric to last for a very long time.
- The product is a combination of regular fabric and stretch fabric, with the stretch fabric placed where extra freedom of movement is required.
- Ergonomically shaped trouser legs are constructed to follow the body's natural movements.
- The kneepad pockets of durable CORDURA® are adjustable so the kneepads have the optimal position on your knees.
- As standard in three different leg lengths, so you can choose the best fit and optimal placement of details just for you.
- Co-certified for use with MASCOT kneepad type SHORT or LONG, as the kneepad pocket is height-adjustable.



MASCOT® ACCELERATE SAFE | T-shirt, long-sleeved, modern fit

Product number: **19081-771**

50% polyester/50% cotton - 150 g/m²

Hi-Vis Group A. Certified to EN ISO 20471 - class 3 (S = class 2). Certified to EN 13758-2 UPF 40+. The product is certified with maximum 0,2300 m² (S) - 0,0000 m² (M-5XL) logo area. This approved area must not be exceeded. Logo on, respectively, front or back of the product can constitute only a maximum of 50% of the total approved logo area in order to maintain the EN ISO 20471-certification.

Size: S-5XL

- Fabric with polyester on one side for both wear resistance and colour fastness and cotton on the other side, for the sake of comfort.
- Modern, close fit with great freedom of movement.
- Extra freedom of movement with elastic reflectors.
- Extra padding over the seam at the neck so the seam does not cause irritation.

Pockets for all your tools

The boilersuit has pockets for all your tools: Breast pocket with zip, front pockets, reinforced back pockets, adjustable hammer loop, reinforced sliding rule pocket, pockets with flaps on the front thigh and a thigh pocket with telephone pocket and flap with concealed press stud fastenings. The pocket flaps on the front thigh are dirt-repellent, keeping an area that easily gets dirty nice and presentable for longer.

Light fabric that tolerates industrial washing

The boilersuit offers superior comfort thanks to details such as the elastic areas placed just where you need that extra suppleness during an active working day. Even though the fabric is lightweight, features such as double-stitched seams on the legs and crotch ensure optimum wear resistance. Furthermore, the combination of fabric 236 and four-way stretch fabric 511 mean that the boilersuit has been tested to retain its shape, colour and functionality, even after multiple industrial washes.

Flexible kneepad pockets with high wear resistance

Remember to choose effective protective kneepads. In this boilersuit, the kneepads are inserted from the bottom, preventing the kneepad pocket from collecting sand and dirt. The kneepad pockets are adjustable so that the kneepads can be placed where your knees need the extra protection. The kneepad pockets are made from the durable CORDURA® fibre.

Excellent freedom of movement

The boilersuit has an excellent fit with elastic at the back and stretch zones in fabric 511, allowing for extra freedom of movement. The front fastening with a two-way zip adds flexibility, while the sleeves are adjustable and feature press studs on the wrist.

Certified visibility and safety

Approved according to the international norm EN ISO 20471 that imposes requirements on visible workwear for employees in high-risk areas. The fluorescent material keeps you visible in daylight and the reflectors with the highest reflectivity make you visible in the dark.





14010



17010



22210



STRETCH ZONES



LIGHTWEIGHT



ERGONOMIC FIT



KNEE PAD POCKET



ProWash®



MASCOT® ACCELERATE SAFE | Boilersuit with kneepad pockets, stretch inserts

Product number: 19519-236

70% polyester/30% cotton - 215 g/m²

Hi-Vis Group A. Certified to EN ISO 20471 - class 3. The product is certified with maximum 0,6400 m² (S-5XL) logo area. This approved area must not be exceeded. Logo on, respectively, front or back of the product can constitute only a maximum of 50% of the total approved logo area in order to maintain the EN ISO 20471-certification.

Size: S-5XL

- Light and strong fabric with ripstop. Ripstop is a super durable weave that helps fabric to last for a very long time.
- The product is a combination of regular fabric and stretch fabric, with the stretch fabric placed where extra freedom of movement is required.
- Fastening with two way zip, storm flap and press studs.
- Access to trousers underneath from both sides.
- Ergonomically shaped trouser legs are constructed to follow the body's natural movements.
- The kneepad pockets of durable CORDURA® are adjustable so the kneepads have the optimal position on your knees.
- Co-certified for use with MASCOT kneepad type SHORT or LONG, as the kneepad pocket is height-adjustable.



Fleece tops with many possible combinations

The fleece tops that are not EN ISO 20471 certified are perfect for combining with non hi-vis products if you want an outfit that is still visible but in cases where certified visibility isn't a requirement. You can also combine these tops with certified hi-vis products for a uniform look from inside out.



MODERN FIT



REFLECTORS



MASCOT® ACCELERATE SAFE | Fleece Jumper with zipper

Product number: **19403-316**

94% polyester/6% elastane - 260 g/m²

Size: S-5XL

- Modern, close fit with great freedom of movement.
- Fastening with zip and internal storm flap, so the wind is kept out.
- Front pockets with zippers for safe storage.
- Inside pockets.
- Detachable ID card holder.
- Extra visibility with the help of reflectors.



LADIES FIT



REFLECTORS



MASCOT® ACCELERATE SAFE | Fleece Jumper with zipper, ladies fit

Product number: **19453-316**

94% polyester/6% elastane - 260 g/m²

Size: XS-5XL

- Specially designed and fitted for women.
- Fastening with zip and internal storm flap, so the wind is kept out.
- Front pockets with zippers for safe storage.
- Inside pockets.
- Detachable ID card holder.
- Extra visibility with the help of reflectors.



MASCOT® ACCELERATE SAFE | Fleece jumper with half zip

Product number: **19303-316**

94% polyester/6% elastane - 260 g/m²

Size: S-5XL

- Modern, close fit with great freedom of movement.
- Zipper at neck with storm flap.
- Front pockets with zippers for safe storage.
- Detachable ID card holder.
- Extra visibility with the help of reflectors.



MASCOT® ACCELERATE SAFE | Fleece jumper with half zip, ladies fit

Product number: **19353-316**

94% polyester/6% elastane - 260 g/m²

Size: XS-5XL

- Specially designed and fitted for women.
- Zipper at neck with storm flap.
- Front pockets with zippers for safe storage.
- Detachable ID card holder.
- Extra visibility with the help of reflectors.

HAVE A SAFE DAY

Need to stay visible, even though your employer doesn't require certified visibility? The reflectors on this jacket will make you especially visible when in sources of light.



14010



1418



1433



14010



1418



1433



1444



17010



1709



17010



1709



1744



1744



22210



22218



22210



BREATHABLE



WINDPROOF



WATER REPELLENT



MODERN FIT



REFLECTORS



OEKO-TEX®
CONFIDENCE IN TEXTILES
STANDARD 100
5548 Shirley
Tested for harmful substances.
www.oeko-tex.com/standard100

MASCOT® ACCELERATE SAFE | Softshell Jacket with reflectors

Product number: **19202-291**

100% polyester - 320 g/m²

Size: S-5XL

- Breathable, windproof and water-repellent.
- Modern, close fit with great freedom of movement.
- Fastening with waterproof zip and internal storm flap.
- Front pockets with waterproof zips.
- Adjustable elastic drawstring at waist.
- Extra visibility with the help of reflectors.



LADIES FIT



BREATHABLE



WINDPROOF



WATER REPELLENT



REFLECTORS



OEKO-TEX®
CONFIDENCE IN TEXTILES
STANDARD 100
5548 Shirley
Tested for harmful substances.
www.oeko-tex.com/standard100

MASCOT® ACCELERATE SAFE | Softshell Jacket with reflectors, ladies fit

Product number: **19212-291**

100% polyester - 320 g/m²

Size: XS-5XL

- Specially designed and fitted for women.
- Breathable, windproof and water-repellent.
- Modern, close fit with great freedom of movement.
- Fastening with waterproof zip and internal storm flap.
- Front pockets with waterproof zips.
- Adjustable elastic drawstring at waist.
- Extra visibility with the help of reflectors.

Remember! This jacket is not certified in accordance with the EN ISO 20471 standard.





14010



1418



1433



1444



17010



1709



1744



22210



22218



MASCOT® ACCELERATE SAFE | Outer Shell Jacket with lightweight lining, waterproof

Product number: 19301-231

100% polyester - 210 g/m²

Hi-Vis Group A. Certified to EN ISO 20471 - class 3 (S-M = class 2) and EN 343 - class 4/4/X. The product is certified with maximum 0,2200 m² (S-M) - 0,0400 m² (L-5XL) logo area. This approved area must not be exceeded. Logo on, respectively, front or back of the product can constitute only a maximum of 50% of the total approved logo area in order to maintain the EN ISO 20471-certification.

Size: S-5XL

- Breathable, wind and waterproof with taped seams.
- Detachable lined hood with adjustable elastic drawstring.
- Fastening with waterproof zip and internal storm flap.
- Chest pocket with waterproof zip.
- Front pockets with waterproof zips.
- Flap on back of jacket can be folded up for standard back length or released for extended back.



14010



1418



1433



17010



1709



1744



22210



MASCOT® ACCELERATE SAFE | Softshell Jacket, ladies fit, breathable, windproof and water-repellent

Product number: **19012-143**

100% polyester - 330 g/m²

Hi-Vis Group A. Certified to EN ISO 20471 - class 2. The product is certified with maximum 0,1800 m² (XS-5XL) logo area. This approved area must not be exceeded. Logo on, respectively, front or back of the product can constitute only a maximum of 50% of the total approved logo area in order to maintain the EN ISO 20471-certification.

Size: XS-5XL

- Specially designed and fitted for women.
- Breathable, windproof and water-repellent.
- Modern, close fit with great freedom of movement.
- Fastening with waterproof zip and internal storm flap.
- Front pockets with waterproof zips.
- Adjustable elastic drawstring at waist.

Innovative lining

The lining on this parka bears a CLIMASCOT® Lightweight Insulation label. As well as having particularly high insulating properties, CLIMASCOT® is also breathable and lightweight and therefore takes up very little space when compressed. CLIMASCOT® is also an eco-friendly choice as it is made from recycled materials.

All the pockets you need

With this parka, you can rest assured that all your pocket contents are safely tucked away. Both the front pockets and the breast pocket come with a waterproof zip. Inside, the parka has another three pockets; two zipped pockets and one open mesh pocket. An added detail is the detachable ID-card holder and an extra piece of fabric at the bottom on the back, which folds away via buttons. The fabric adds extra length at the back to protect against the elements.

Individual hood adjustment

Avoid wind and rain on your head and neck with this lined wind and waterproof hood. Adjust it using the concealed elastic cord with cord stop. When not in use, the hood can be easily removed using the hook and loop fastening and press studs.

Visible and safe

This parka is approved in accordance with the international standard EN ISO 20471, which sets requirements for high-vis workwear for employees in high-risk areas. The fluorescent fabric keeps you visible in daylight, while the reflectors keep you visible in the dark thanks to their supreme reflectiveness. The parka is certified as class three, which is the highest certification class attainable.

Certified weather protection

The parka is breathable, wind and waterproof, and approved in accordance with both the EN 343 standard for protection against rain and the EN 342 standard for protection against cold. The front zip is waterproof and has an internal storm cuff. Thanks to the garment's ergonomic cut and elastic fabric, this parka is extremely comfortable to wear and offers full freedom of movement.



Fabric 449

Fabric 449 is a lightweight wind and waterproof fabric with a slight stretch. The products in this fabric quality are flexible and give users a high level of comfort.



MASCOT® ACCELERATE SAFE | Parka with CLIMASCOT®-lining, lightweight

Product number: **19030-449**

100% polyester - 210 g/m²

Hi-Vis Group A. Certified to EN ISO 20471 - class 3, EN 343 - class 4/1/X and EN 342:2017- kl. 3/WP (2,258 clo). The product is certified with maximum 0,2100 m² (S-5XL) logo area. This approved area must not be exceeded. Logo on, respectively, front or back of the product can constitute only a maximum of 50% of the total approved logo area in order to maintain the EN ISO 20471-certification.

Size: XS-5XL

- Breathable, wind and waterproof with taped seams.
- Unique CLIMASCOT® insulation provides warmth without bulk. Lightweight, soft CLIMASCOT® insulation takes up almost no space when compressed.
- Fastening with waterproof zip and internal storm flap.
- Chest pocket with waterproof zip.
- Front pockets with waterproof zips.
- Flap on back of jacket can be folded up for standard back length or released for extended back.

More about fabric 449

The fabric's elasticity is combined with a very low weight. The result is a flexible product that gives users optimum freedom of movement. Fabric 449 also protects against extreme weather and is tested to withstand water resistancy of 10,000 mm. Together, the fabric and membrane provide a high level of breathability to help eliminate body heat, keeping you warm and dry all day long.

CLIMASCOT®

Lightweight Insulation



RECYCLED CONTENT



LIGHTWEIGHT



INSULATING



BREATHABLE



14010



1418



1433



1444



17010



1709



1744



22210



22218



BREATHABLE



WINDPROOF



WATERPROOF



EN ISO 20471



EN 343

MASCOT® ACCELERATE SAFE | Outer shell jacket with lining, lightweight

Product number: **19001-449**

100% polyester - 210 g/m²

Hi-Vis Group A. Certified to EN ISO 20471 - class 3 (S = class 2) and EN 343 - class 4/4/X. The product is certified with maximum 0,2800 m² (S) - 0,0400 m² (M-5XL) logo area. This approved area must not be exceeded. Logo on, respectively, front or back of the product can constitute only a maximum of 50% of the total approved logo area in order to maintain the EN ISO 20471-certification.

Size: S-5XL

- Breathable, wind and waterproof with taped seams.
- Fastening with waterproof zip and internal storm flap.
- Chest pocket with waterproof zip.
- Front pockets with waterproof zips.
- Flap on back of jacket can be folded up for standard back length or released for extended back.



14



17



222



BREATHABLE



WINDPROOF



WATERPROOF


ERGONOMIC
FIT


MASCOT® ACCELERATE SAFE | Over trousers with lightweight lining, waterproof

Product number: **19590-449**

100% polyester - 210 g/m²

Hi-Vis Group Y. Certified to EN ISO 20471 - class 2 and EN 343 - class 4/4/X. The product is certified with maximum 0,5100 m² (S-5XL) logo area. This approved area must not be exceeded. Logo on, respectively, front or back of the product can constitute only a maximum of 50% of the total approved logo area in order to maintain the EN ISO 20471-certification.

Size: S-5XL

- Breathable, wind and waterproof with taped seams.
- Very durable.
- Ergonomically shaped trouser legs are constructed to follow the body's natural movements.
- Elastic and drawstring waist.
- Zip on outside of legs.
- Co-certified for use with MASCOT kneepad type SHORT or LONG, as the kneepad pocket is height-adjustable.



14010



1418



1433



17010



1709



1744



22210



MASCOT® ACCELERATE SAFE | Outer shell jacket with lining, ladies fit, lightweight

Product number: **19011-449**

100% polyester - 210 g/m²

Hi-Vis Group A/B. Certified to EN ISO 20471 - class 3 (XS-L = class 2) and EN 343 - class 4/4/X. The product is certified with maximum 0,1400 m² (XS-M) - 0,0205 m² (L) - 0,1100 m² (XL-5XL) logo area. This approved area must not be exceeded. Logo on, respectively, front or back of the product can constitute only a maximum of 50% of the total approved logo area in order to maintain the EN ISO 20471-certification.

Size: XS-5XL

- Specially designed and fitted for women.
- Breathable, wind and waterproof with taped seams.
- Fastening with waterproof zip and internal storm flap.
- Chest pocket with waterproof zip.
- Front pockets with waterproof zips.
- Flap on back of jacket can be folded up for standard back length or released for extended back.



14010



1418



1433



1444



17010



1709



1744



22210



22218



CLIMASCOT®
Lightweight Insulation



MASCOT® ACCELERATE SAFE | Winter jacket CLIMASCOT®-lining, lightweight

Product number: **19035-449**

100% polyester - 210 g/m²

Hi-Vis Group A. Certified to EN ISO 20471 - class 3, EN 343 - class 4/1/X and EN 342:2017 - kl. 3/WP (2,01 clo). The product is certified with maximum 0,0300 m² (S-5XL) logo area. This approved area must not be exceeded. Logo on, respectively, front or back of the product can constitute only a maximum of 50% of the total approved logo area in order to maintain the EN ISO 20471-certification.

Size: S-5XL

- Breathable, wind and waterproof with taped seams.
- Unique CLIMASCOT® insulation provides warmth without bulk. Lightweight, soft CLIMASCOT® insulation takes up almost no space when compressed.
- Fastening with waterproof zip and internal storm flap.
- Chest pocket with waterproof zip.
- Front pockets with waterproof zips.
- Flap on back of jacket can be folded up for standard back length or released for extended back.
- Interior zipper at lower back for logo printing / embroidery.



14010



17010



1709



22210



CLIMASCOT®
Lightweight Insulation



MASCOT® ACCELERATE SAFE | Winter Trousers with kneepad pockets, CLIMASCOT®-lining

Product number: **19090-449**

100% polyester - 210 g/m²

Hi-Vis Group Y. Certified to EN ISO 20471 - class 2, EN 343 - class 4/1/X and EN 342:2017 - kl. 3/WP (1,7 clo). The product is certified with maximum 0,1900 m² (S-5XL) logo area. This approved area must not be exceeded. Logo on, respectively, front or back of the product can constitute only a maximum of 50% of the total approved logo area in order to maintain the EN ISO 20471-certification.

Size: S-5XL

- Breathable, wind and waterproof with taped seams.
- Very durable.
- Unique CLIMASCOT® insulation provides warmth without bulk. Lightweight, soft CLIMASCOT® insulation takes up almost no space when compressed.
- Ergonomically shaped trouser legs are constructed to follow the body's natural movements.
- Ruler pocket with Kevlar® reinforcement - particularly resistant to pointed and sharp objects.
- Raised back piece provides support and extra protection against cold and wind.
- Snow locks inside the leg to keep snow and dirt out.
- Co-certified for use with MASCOT kneepad type SHORT or LONG, as the kneepad pocket is height-adjustable.



EN 343



EN 342



Protection against cold and rain

When cold and rain are really a challenge, you must be able to trust that your workwear will protect you. You can do so by choosing winter workwear with EN 342, protection against cold and EN 343, protection against rain.

EN343

Y
Y
X

EN 343:2019

Products that are certified in accordance with EN 343:2019 are tested for their level of waterproofness and breathability in the product as a whole. This certification is expressed in three different figures which respectively indicates the product's waterproofness, breathability and whether the finished product has been tested in a downpour. The first two figures indicate a class between 1–4, where four is the highest. The last figure is either an R or an X, where R indicates that the product has been tested.

EN342

X
WP

EN 342

Each product with EN 342:2017 certification is individually certified in accordance with different classes. These classes describe the thermal insulation value, air permeability and, if applicable, the waterproofness of the product. The letter Y on the side of an EN 342:2017 pictogram indicates the thermal insulation value. On MASCOT products, this information won't be presented beside the symbol. Instead, it is generally stated above the product information section.



Parka with CLIMASCOT®-lining,
lightweight
19030-449-14010
see page 71



Winter jacket with CLIMASCOT®-
lining
19335-231-14010
see page 54



Winter jacket with CLIMASCOT®-
lining
19335-231-1418
see page 54



Winter jacket with CLIMASCOT®-
lining
19335-231-1433
see page 54



Winter jacket with CLIMASCOT®-
lining
19335-231-1444
see page 54



Winter jacket with CLIMASCOT®-
lining
19435-231-14010
see page 54



Winter jacket CLIMASCOT®-lining,
lightweight
19035-449-14010
see page 74



Winter jacket CLIMASCOT®-lining,
lightweight
19035-449-1418
see page 74



Winter jacket CLIMASCOT®-lining,
lightweight
19035-449-1433
see page 74



Winter jacket CLIMASCOT®-lining,
lightweight
19035-449-1444
see page 74



Winter jacket CLIMASCOT®-lining,
ladies fit, lightweight
19045-449-14010
see page 56



Winter jacket CLIMASCOT®-lining,
ladies fit, lightweight
19045-449-1418
see page 56



Winter jacket CLIMASCOT®-lining,
ladies fit, lightweight
19045-449-1433
see page 56



Outer Shell Jacket with lightweight
lining, waterproof
19301-231-14010
see page 68



Outer Shell Jacket with lightweight
lining, waterproof
19301-231-1418
see page 68



Outer Shell Jacket with lightweight
lining, waterproof
19301-231-1433
see page 68



Outer Shell Jacket with lightweight lining, waterproof
19301-231-1444
see page 68



Outer shell jacket with lining, lightweight
19001-449-14010
see page 72



Outer shell jacket with lining, lightweight
19001-449-1418
see page 72



Outer shell jacket with lining, lightweight
19001-449-1433
see page 72



Outer shell jacket with lining, lightweight
19001-449-1444
see page 72



Outer shell jacket with lining, ladies fit, lightweight
19011-449-14010
see page 73



Outer shell jacket with lining, ladies fit, lightweight
19011-449-1418
see page 73



Outer shell jacket with lining, ladies fit, lightweight
19011-449-1433
see page 73



Softshell Jacket with reflectors
19202-291-14010
see page 66



Softshell Jacket with reflectors
19202-291-1418
see page 66



Softshell Jacket with reflectors
19202-291-1433
see page 66



Softshell Jacket with reflectors
19202-291-1444
see page 66



Softshell Jacket with reflectors, ladies fit
19212-291-14010
see page 66



Softshell Jacket with reflectors, ladies fit
19212-291-1418
see page 66



Softshell Jacket with reflectors, ladies fit
19212-291-1433
see page 66



Softshell Jacket, breathable, windproof and water-repellent
19002-143-14010
see page 28



Softshell Jacket, breathable,
windproof and water-repellent
19002-143-1418
see page 28



Softshell Jacket, breathable,
windproof and water-repellent
19002-143-1433
see page 28



Softshell Jacket, breathable,
windproof and water-repellent
19002-143-1444
see page 28



Softshell Jacket, ladies fit, breathable,
windproof and water-repellent
19012-143-14010
see page 69



Softshell Jacket, ladies fit, breathable,
windproof and water-repellent
19012-143-1418
see page 69



Softshell Jacket, ladies fit, breathable,
windproof and water-repellent
19012-143-1433
see page 69



Jacket, four-way stretch
19009-511-14010
see page 23



Jacket, four-way stretch
19009-511-1418
see page 23



Jacket, four-way stretch
19009-511-1433
see page 23



Jacket, four-way stretch
19009-511-1444
see page 23



Jacket, ladies fit, four-way stretch
19008-511-14010
see page 20



Jacket, ladies fit, four-way stretch
19008-511-1418
see page 20



Jacket, ladies fit, four-way stretch
19008-511-1433
see page 20



Jacket, stretch inserts
19509-236-14010
see page 58



Jacket, stretch inserts
19509-236-1418
see page 58



Tool Vest, four-way stretch
19589-711-14010
see page 45



Knitted Jumper with half zip
19005-351-14010
see page 38



Knitted Jumper with half zip
19005-351-1418
see page 38



Fleece Jumper with zipper
19103-315-14010
see page 46



Fleece Jumper with zipper
19103-315-1418
see page 46



Fleece Jumper with zipper
19103-315-1433
see page 46



Fleece Jumper with zipper
19103-315-1444
see page 46



Fleece Jumper with zipper, ladies fit
19153-315-14010
see page 24



Fleece Jumper with zipper, ladies fit
19153-315-1418
see page 24



Fleece Jumper with zipper, ladies fit
19153-315-1433
see page 24



Fleece Jumper with zipper
19403-316-14010
see page 64



Fleece Jumper with zipper
19403-316-1418
see page 64



Fleece Jumper with zipper
19403-316-1433
see page 64



Fleece Jumper with zipper
19403-316-1444
see page 64



Fleece Jumper with zipper, ladies fit
19453-316-14010
see page 64



Fleece Jumper with zipper, ladies fit
19453-316-1418
see page 64



Fleece Jumper with zipper, ladies fit
19453-316-1433
see page 64



Fleece jumper with half zip
19303-316-14010
see page 65



Fleece jumper with half zip
19303-316-1418
see page 65



Fleece jumper with half zip
19303-316-1433
see page 65



Fleece jumper with half zip
19303-316-1444
see page 65



Fleece jumper with half zip, ladies fit
19353-316-14010
see page 65



Fleece jumper with half zip, ladies fit
19353-316-1418
see page 65



Fleece jumper with half zip, ladies fit
19353-316-1433
see page 65



Hoodie with zipper, modern fit
19284-781-14010
see page 50



Hoodie with zipper, modern fit
19284-781-1418
see page 50



Hoodie with zipper, modern fit
19284-781-1433
see page 50



Hoodie with zipper, modern fit
19284-781-1444
see page 50



Sweatshirt with zipper, modern fit
19184-781-14010
see page 26



Sweatshirt with zipper, modern fit
19184-781-1418
see page 26



Sweatshirt with zipper, modern fit
19184-781-1433
see page 26



Sweatshirt with zipper, modern fit
19184-781-1444
see page 26



Sweatshirt, modern fit
19084-781-14010
see page 37



Sweatshirt, modern fit
19084-781-1418
see page 37



Sweatshirt, modern fit
19084-781-1433
see page 37



Sweatshirt, modern fit
19084-781-1444
see page 37



T-shirt, long-sleeved, modern fit
19081-771-14010
see page 61



T-shirt, long-sleeved, modern fit
19081-771-1418
see page 61



T-shirt, long-sleeved, modern fit
19081-771-1433
see page 61



T-shirt, long-sleeved, modern fit
19081-771-1444
see page 61



T-shirt, long-sleeved, ladies fit
19091-771-14010
see page 52



T-shirt, long-sleeved, ladies fit
19091-771-1418
see page 52



T-shirt, long-sleeved, ladies fit
19091-771-1433
see page 52



Polo Shirt, modern fit
19083-771-14010
see page 34



Polo Shirt, modern fit
19083-771-1418
see page 34



Polo Shirt, modern fit
19083-771-1433
see page 34



Polo Shirt, modern fit
19083-771-1444
see page 34



Polo Shirt, ladies fit
19093-771-14010
see page 49



Polo Shirt, ladies fit
19093-771-1418
see page 49



Polo Shirt, ladies fit
19093-771-1433
see page 49



T-shirt, modern fit
19082-771-14010
see page 30



T-shirt, modern fit
19082-771-1418
see page 30



T-shirt, modern fit
19082-771-1433
see page 30



T-shirt, modern fit
19082-771-1444
see page 30



T-shirt, ladies fit
19092-771-14010
see page 32



T-shirt, ladies fit
19092-771-1418
see page 32



T-shirt, ladies fit
19092-771-1433
see page 32



T-shirt with print, modern fit
19182-965-0814
see page 49



Boilersuit with kneepad pockets,
stretch inserts
19519-236-14010
see page 63



Bib & Brace with kneepad pockets,
stretch inserts
19569-236-14010
see page 59



Bib & Brace with kneepad pockets,
stretch inserts
19569-236-1418
see page 59



Bib & Brace with kneepad pockets,
stretch inserts
19669-236-01014
see page 61



Winter Trousers with kneepad
pockets, CLIMASCOT®-lining
19090-449-14010
see page 74



Over trousers with lightweight lining,
waterproof
19590-449-14
see page 73



Trousers with kneepad pockets and
holster pockets, four-way stretch
19031-711-14010
see page 37



Trousers with kneepad pockets and
holster pockets, four-way stretch
19031-711-1418
see page 37



Trousers with kneepad pockets and
holster pockets, four-way stretch
19031-711-1433
see page 37



Trousers with kneepad pockets and
holster pockets, four-way stretch
19031-711-1444
see page 37



Trousers with kneepad pockets and
holster pockets, four-way stretch
19131-711-01014
see page 38



Trousers with kneepad pockets and
holster pockets, four-way stretch
19131-711-1814
see page 38



Trousers with kneepad pockets and
holster pockets, four-way stretch
19131-711-3314
see page 38



Trousers with kneepad pockets and
holster pockets, four-way stretch
19131-711-4414
see page 38



Trousers with kneepad pockets, four-
way stretch
19479-711-14010
see page 45



Trousers with kneepad pockets, four-
way stretch
19079-511-14010
see page 16



Trousers with kneepad pockets, four-
way stretch
19079-511-1418
see page 16



Trousers with kneepad pockets, four-way stretch
19079-511-1433
see page 16



Trousers with kneepad pockets, four-way stretch
19079-511-1444
see page 16



Trousers with kneepad pockets, ladies fit DIAMOND, four-way stretch
19078-511-14010
see page 21



Trousers with kneepad pockets, ladies fit DIAMOND, four-way stretch
19078-511-1418
see page 21



Trousers with kneepad pockets, ladies fit DIAMOND, four-way stretch
19078-511-1433
see page 21



Trousers with kneepad pockets, four-way stretch
19179-511-01014
see page 23



Trousers with kneepad pockets, four-way stretch
19179-511-1814
see page 23



Trousers with kneepad pockets, four-way stretch
19179-511-3314
see page 23



Trousers with kneepad pockets, ladies fit DIAMOND, four-way stretch
19178-511-01014
see page 25



Trousers with kneepad pockets, ladies fit DIAMOND, four-way stretch
19178-511-1814
see page 25



Trousers with kneepad pockets, ladies fit DIAMOND, four-way stretch
19178-511-3314
see page 25



Trousers with kneepad pockets, stretch inserts
19579-236-14010
see page 54



Trousers with kneepad pockets,
stretch inserts
19579-236-1418
see page 54



Trousers with kneepad pockets,
ladies fit DIAMOND, stretch inserts
19578-236-14010
see page 56



Trousers with kneepad pockets,
ladies fit DIAMOND, stretch inserts
19578-236-1418
see page 56



Trousers with kneepad pockets,
stretch inserts
19679-236-01014
see page 50



Trousers with kneepad pockets,
stretch inserts
19679-236-1814
see page 50



Trousers with kneepad pockets,
ladies fit DIAMOND, stretch inserts
19678-236-01014
see page 52



Trousers with kneepad pockets,
ladies fit DIAMOND, stretch inserts
19678-236-1814
see page 52



Trousers with kneepad pockets, four-
way stretch
19279-510-14010
see page 26



Trousers with kneepad pockets, four-
way stretch
19279-510-1418
see page 26



Trousers with thigh pockets, four-
way stretch
19379-510-01014
see page 29



¾ length trousers with kneepad pockets and holster pockets, four-way stretch
19049-711-14010
see page 49



Shorts, long, with holster pockets, four-way stretch
19349-711-14
see page 46



Shorts, long, four-way stretch
19249-510-14
see page 30



Shorts, long, ladies fit DIAMOND, four-way stretch
19248-510-14
see page 33



Skirt, ladies fit DIAMOND, four-way stretch
19244-711-14
see page 49



Parka with CLIMASCOT®-lining,
lightweight
19030-449-17010
see page 71



Winter jacket with CLIMASCOT®-
lining
19335-231-17010
see page 54



Winter jacket with CLIMASCOT®-
lining
19335-231-1709
see page 54



Winter jacket with CLIMASCOT®-
lining
19335-231-1744
see page 54



Winter jacket with CLIMASCOT®-
lining
19435-231-17010
see page 54



Winter jacket with CLIMASCOT®-
lining
19435-231-1709
see page 54



Winter jacket CLIMASCOT®-lining,
lightweight
19035-449-17010
see page 74



Winter jacket CLIMASCOT®-lining,
lightweight
19035-449-1709
see page 74



Winter jacket CLIMASCOT®-lining,
lightweight
19045-449-1744
see page 74



Winter jacket CLIMASCOT®-lining,
ladies fit, lightweight
19045-449-17010
see page 56



Winter jacket CLIMASCOT®-lining,
ladies fit, lightweight
19045-449-1709
see page 56



Winter jacket CLIMASCOT®-lining,
ladies fit, lightweight
19045-449-1744
see page 56



Outer Shell Jacket with lightweight
lining, waterproof
19301-231-17010
see page 68



Outer Shell Jacket with lightweight
lining, waterproof
19301-231-1709
see page 68



Outer Shell Jacket with lightweight
lining, waterproof
19301-231-1744
see page 68



Outer shell jacket with lining,
lightweight
19001-449-17010
see page 72



Outer shell jacket with lining,
lightweight
19001-449-1709
see page 72



Outer shell jacket with lining,
lightweight
19001-449-1744
see page 72



Outer shell jacket with lining, ladies
fit, lightweight
19011-449-17010
see page 73



Outer shell jacket with lining, ladies
fit, lightweight
19011-449-1709
see page 73



Outer shell jacket with lining, ladies
fit, lightweight
19011-449-1744
see page 73



Softshell Jacket with reflectors
19202-291-17010
see page 66



Softshell Jacket with reflectors
19202-291-1709
see page 66



Softshell Jacket with reflectors
19202-291-1744
see page 66



Softshell Jacket with reflectors, ladies
fit
19212-291-17010
see page 66



Softshell Jacket with reflectors, ladies
fit
19212-291-1709
see page 66



Softshell Jacket with reflectors, ladies
fit
19212-291-1744
see page 66



Softshell Jacket, breathable,
windproof and water-repellent
19002-143-17010
see page 28



Softshell Jacket, breathable,
windproof and water-repellent
19002-143-1709
see page 28



Softshell Jacket, breathable,
windproof and water-repellent
19002-143-1744
see page 28



Softshell Jacket, ladies fit, breathable,
windproof and water-repellent
19012-143-17010
see page 69



Softshell Jacket, ladies fit, breathable,
windproof and water-repellent
19012-143-1709
see page 69



Softshell Jacket, ladies fit, breathable,
windproof and water-repellent
19012-143-1744
see page 69



Jacket, four-way stretch
19009-511-17010
see page 23



Jacket, four-way stretch
19009-511-1709
see page 23



Jacket, four-way stretch
19009-511-1744
see page 23



Jacket, ladies fit, four-way stretch
19008-511-17010
see page 20



Jacket, ladies fit, four-way stretch
19008-511-1709
see page 20



Jacket, ladies fit, four-way stretch
19008-511-1744
see page 20



Jacket, stretch inserts
19509-236-17010
see page 58



Tool Vest, four-way stretch
19589-711-17010
see page 45



Tool Vest, four-way stretch
19589-711-1709
see page 45



Knitted Jumper with half zip
19005-351-17010
see page 38



Knitted Jumper with half zip
19005-351-1709
see page 38



Fleece Jumper with zipper
19103-315-17010
see page 46



Fleece Jumper with zipper
19103-315-1709
see page 46



Fleece Jumper with zipper
19103-315-1744
see page 46



Fleece Jumper with zipper, ladies fit
19153-315-17010
see page 24



Fleece Jumper with zipper, ladies fit
19153-315-1709
see page 24



Fleece Jumper with zipper, ladies fit
19153-315-1744
see page 24



Fleece Jumper with zipper
19403-316-17010
see page 64



Fleece Jumper with zipper
19403-316-1709
see page 64



Fleece Jumper with zipper
19403-316-1744
see page 64



Fleece Jumper with zipper, ladies fit
19453-316-17010
see page 64



Fleece Jumper with zipper, ladies fit
19453-316-1709
see page 64



Fleece Jumper with zipper, ladies fit
19453-316-1744
see page 64



Fleece jumper with half zip
19303-316-17010
see page 65



Fleece jumper with half zip
19303-316-1709
see page 65



Fleece jumper with half zip
19303-316-1744
see page 65



Fleece jumper with half zip, ladies fit
19353-316-17010
see page 65



Fleece jumper with half zip, ladies fit
19353-316-1709
see page 65



Fleece jumper with half zip, ladies fit
19353-316-1744
see page 65



Hoodie with zipper, modern fit
19284-781-17010
see page 50



Hoodie with zipper, modern fit
19284-781-1709
see page 50



Hoodie with zipper, modern fit
19284-781-1744
see page 50



Sweatshirt with zipper, modern fit
19184-781-17010
see page 26



Sweatshirt with zipper, modern fit
19184-781-1709
see page 26



Sweatshirt with zipper, modern fit
19184-781-1744
see page 26



Sweatshirt, modern fit
19084-781-17010
see page 37



Sweatshirt, modern fit
19084-781-1709
see page 37



Sweatshirt, modern fit
19084-781-1744
see page 37



T-shirt, long-sleeved, modern fit
19081-771-17010
see page 61



T-shirt, long-sleeved, modern fit
19081-771-1709
see page 61



T-shirt, long-sleeved, modern fit
19081-771-1744
see page 61



T-shirt, long-sleeved, ladies fit
19091-771-17010
see page 52



T-shirt, long-sleeved, ladies fit
19091-771-1709
see page 52



T-shirt, long-sleeved, ladies fit
19091-771-1744
see page 52



Polo Shirt, modern fit
19083-771-17010
see page 34



Polo Shirt, modern fit
19083-771-1709
see page 34



Polo Shirt, modern fit
19083-771-1744
see page 34



Polo Shirt, ladies fit
19093-771-17010
see page 49



Polo Shirt, ladies fit
19093-771-1709
see page 49



Polo Shirt, ladies fit
19093-771-1744
see page 49



T-shirt, modern fit
19082-771-17010
see page 30



T-shirt, modern fit
19082-771-1709
see page 30



T-shirt, modern fit
19082-771-1744
see page 30



T-shirt, ladies fit
19092-771-17010
see page 32



T-shirt, ladies fit
19092-771-1709
see page 32



T-shirt, ladies fit
19092-771-1744
see page 32



T-shirt with print, modern fit
19182-965-0817
see page 49



Boilersuit with kneepad pockets,
stretch inserts
19519-236-17010
see page 63



Combi suit with kneepad- and
holster pockets, four-way stretch
19069-711-1709
see page 40



Combi suit with kneepad- and
holster pockets, four-way stretch
19169-711-0917
see page 40



Bib & Brace with kneepad pockets,
stretch inserts
19569-236-17010
see page 59



Bib & Brace with kneepad pockets,
stretch inserts
19669-236-01017
see page 61



Winter Trousers with kneepad
pockets, CLIMASCOT®-lining
19090-449-17010
see page 74



Winter Trousers with kneepad
pockets, CLIMASCOT®-lining
19090-449-1709
see page 74



Over trousers with lightweight lining,
waterproof
19590-449-17
see page 73



Trousers with kneepad pockets and
holster pockets, four-way stretch
19031-711-17010
see page 37



Trousers with kneepad pockets and
holster pockets, four-way stretch
19031-711-1709
see page 37



Trousers with kneepad pockets and
holster pockets, four-way stretch
19031-711-1744
see page 37



Trousers with kneepad pockets and
holster pockets, four-way stretch
19131-711-01017
see page 38



Trousers with kneepad pockets and
holster pockets, four-way stretch
19131-711-0917
see page 38



Trousers with kneepad pockets and
holster pockets, four-way stretch
19131-711-4417
see page 38



Trousers with kneepad pockets, four-
way stretch
19479-711-17010
see page 45



Trousers with kneepad pockets, four-
way stretch
19479-711-1709
see page 45



Trousers with kneepad pockets, four-
way stretch
19879-711-01017
see page 45



Trousers with kneepad pockets, four-
way stretch
19879-711-0917
see page 45



Trousers with kneepad pockets, four-
way stretch
19079-511-17010
see page 16



Trousers with kneepad pockets, four-way stretch
19079-511-1709
see page 16



Trousers with kneepad pockets, four-way stretch
19079-511-1744
see page 16



Trousers with kneepad pockets, ladies fit DIAMOND, four-way stretch
19078-511-17010
see page 21



Trousers with kneepad pockets, ladies fit DIAMOND, four-way stretch
19078-511-1709
see page 21



Trousers with kneepad pockets, ladies fit DIAMOND, four-way stretch
19078-511-1744
see page 21



Trousers with kneepad pockets, four-way stretch
19179-511-01017
see page 23



Trousers with kneepad pockets, four-way stretch
19179-511-0917
see page 23



Trousers with kneepad pockets, ladies fit DIAMOND, four-way stretch
19178-511-01017
see page 25



Trousers with kneepad pockets, ladies fit DIAMOND, four-way stretch
19178-511-0917
see page 25



Trousers with kneepad pockets, ladies fit DIAMOND, four-way stretch
19178-511-4417
see page 25



Trousers with kneepad pockets, stretch inserts
19579-236-17010
see page 54



Trousers with kneepad pockets, ladies fit DIAMOND, stretch inserts
19578-236-17010
see page 56



Trousers with kneepad pockets,
stretch inserts
19679-236-01017
see page 50



Trousers with kneepad pockets,
ladies fit DIAMOND, stretch inserts
19678-236-01017
see page 52



Trousers with kneepad pockets, four-
way stretch
19279-510-17010
see page 26



Trousers with thigh pockets, four-
way stretch
19379-510-01017
see page 29



Trousers with thigh pockets, four-
way stretch
19379-510-0917
see page 29



¾ length trousers with kneepad
pockets and holster pockets, four-
way stretch
19049-711-17010
see page 49



¾ length trousers with kneepad
pockets and holster pockets, four-
way stretch
19049-711-1709
see page 49



Shorts, long, with holster pockets,
four-way stretch
19349-711-17
see page 46



Shorts, long, four-way stretch
19249-510-17
see page 30



Shorts, long, ladies fit DIAMOND,
four-way stretch
19248-510-17
see page 33



Skirt, ladies fit DIAMOND, four-way
stretch
19244-711-17
see page 49



Parka with CLIMASCOT®-lining,
lightweight
19030-449-22210
see page 71



Winter jacket with CLIMASCOT®-
lining
19335-231-22210
see page 54



Winter jacket with CLIMASCOT®-
lining
19335-231-22218
see page 54



Winter jacket CLIMASCOT®-lining,
lightweight
19035-449-22210
see page 74



Winter jacket CLIMASCOT®-lining,
lightweight
19035-449-22218
see page 74



Winter jacket CLIMASCOT®-lining,
ladies fit, lightweight
19045-449-22210
see page 56



Outer Shell Jacket with lightweight
lining, waterproof
19301-231-22210
see page 68



Outer Shell Jacket with lightweight
lining, waterproof
19301-231-22218
see page 68



Outer shell jacket with lining,
lightweight
19001-449-22210
see page 72



Outer shell jacket with lining,
lightweight
19001-449-22218
see page 72



Outer shell jacket with lining, ladies
fit, lightweight
19011-449-22210
see page 73



Softshell Jacket with reflectors
19202-291-22210
see page 66



Softshell Jacket with reflectors
19202-291-22218
see page 66



Softshell Jacket with reflectors, ladies
fit
19212-291-22210
see page 66



Softshell Jacket, breathable,
windproof and water-repellent
19002-143-22210
see page 28



Softshell Jacket, breathable,
windproof and water-repellent
19002-143-22218
see page 28



Softshell Jacket, ladies fit, breathable,
windproof and water-repellent
19012-143-22210
see page 69



Jacket, four-way stretch
19009-511-22210
see page 23



Jacket, four-way stretch
19009-511-22218
see page 23



Jacket, ladies fit, four-way stretch
19008-511-22210
see page 20



Jacket, stretch inserts
19509-236-22210
see page 58



Tool Vest, four-way stretch
19589-711-22210
see page 45



Knitted Jumper with half zip
19005-351-22210
see page 38



Fleece Jumper with zipper
19103-315-22210
see page 46



Fleece Jumper with zipper
19103-315-22218
see page 46



Fleece Jumper with zipper, ladies fit
19153-315-22210
see page 24



Fleece Jumper with zipper
19403-316-22210
see page 24



Fleece Jumper with zipper
19403-316-22218
see page 64



Fleece Jumper with zipper, ladies fit
19453-316-22210
see page 64



Fleece jumper with half zip
19303-316-22210
see page 65



Fleece jumper with half zip
19303-316-22218
see page 65



Fleece jumper with half zip, ladies fit
19353-316-22210
see page 65



Hoodie with zipper, modern fit
19284-781-22210
see page 50



Hoodie with zipper, modern fit
19284-781-22218
see page 50



Sweatshirt with zipper, modern fit
19184-781-22210
see page 26



Sweatshirt with zipper, modern fit
19184-781-22218
see page 26



Sweatshirt, modern fit
19084-781-22210
see page 37



Sweatshirt, modern fit
19084-781-22218
see page 37



T-shirt, long-sleeved, modern fit
19081-771-22210
see page 61



T-shirt, long-sleeved, modern fit
19081-771-22218
see page 61



T-shirt, long-sleeved, ladies fit
19091-771-22210
see page 52



Polo Shirt, modern fit
19083-771-22210
see page 34



Polo Shirt, modern fit
19083-771-22218
see page 34



Polo Shirt, ladies fit
19093-771-22210
see page 49



T-shirt, modern fit
19082-771-22210
see page 30



T-shirt, modern fit
19082-771-22218
see page 30



T-shirt, ladies fit
19092-771-22210
see page 32



T-shirt with print, modern fit
19182-965-08222
see page 49



Boilersuit with kneepad pockets,
stretch inserts
19519-236-22210
see page 63



Bib & Brace with kneepad pockets,
stretch inserts
19569-236-22210
see page 59



Winter Trousers with kneepad
pockets, CLIMASCOT®-lining
19090-449-22210
see page 74



Over trousers with lightweight lining,
waterproof
19590-449-222
see page 73



Trousers with kneepad pockets and
holster pockets, four-way stretch
19031-711-22210
see page 37



Trousers with kneepad pockets and
holster pockets, four-way stretch
19031-711-22218
see page 37



Trousers with kneepad pockets and
holster pockets, four-way stretch
19131-711-10222
see page 38



Trousers with kneepad pockets and
holster pockets, four-way stretch
19131-711-18222
see page 38



Trousers with kneepad pockets, four-
way stretch
19079-511-22210
see page 16



Trousers with kneepad pockets, four-
way stretch
19079-511-22218
see page 16



Trousers with kneepad pockets,
ladies fit DIAMOND, four-way stretch
19078-511-22210
see page 21



Trousers with kneepad pockets, four-
way stretch
19179-511-10222
see page 23



Trousers with kneepad pockets, four-
way stretch
19179-511-18222
see page 23



Trousers with kneepad pockets,
ladies fit DIAMOND, four-way stretch
19178-511-10222
see page 25



Trousers with kneepad pockets,
stretch inserts
19579-236-22210
see page 54



Trousers with kneepad pockets,
ladies fit DIAMOND, stretch inserts
19578-236-22210
see page 56



Trousers with kneepad pockets,
stretch inserts
19679-236-10222
see page 50



Trousers with kneepad pockets,
ladies fit DIAMOND, stretch inserts
19678-236-10222
see page 52



Trousers with thigh pockets, four-
way stretch
19379-510-10222
see page 29



¾ length trousers with kneepad
pockets and holster pockets, four-
way stretch
19049-711-22210
see page 49



Shorts, long, with holster pockets,
four-way stretch
19349-711-222
see page 46



Shorts, long, four-way stretch
19249-510-222
see page 30



Shorts, long, ladies fit DIAMOND,
four-way stretch
19248-510-222
see page 33



Skirt, ladies fit DIAMOND, four-way
stretch
19244-711-222
see page 49





Workwear symbols

Next to each product in this catalogue you will find a number of symbols. They offer you a quick overview of the product's properties. On this page, you can read more about, what the headline in the symbol covers.



Breathable

Breathability in waterproof/water-repellent clothing is especially important if you sweat while working in cold environments. If you do not get rid of the moisture, there is a great risk that your wet clothes will get cold and you will freeze as a result.



Ultimate Stretch

Products with this symbol are made with four-way stretch. The stretch material is flexible in all directions giving you an extraordinary freedom of movement. Products with four-way stretch are soft and comfortable to wear and follow your every move providing extra comfort for your work day.



Windproof

When your clothing is windproof you hold heat more easily. Choose products with this symbol when you don't want the wind to disrupt your everyday comfort.



Stretch Zones

The trousers are very comfortable to wear because of the stretch zones that are placed where you need extra flexibility in an active workday. The stretch inserts, especially around the knees and the lower back, lead to increased freedom of movement, particularly when working on your knees.



Waterproof

100%. This symbol is your assurance that MASCOT does not allow as much as a single drop of water penetration. Zippers are waterproof and seams are taped on the back.



Lightweight

The symbol indicates that the workwear is light in weight. The garment remains highly durable. You should choose products carrying this symbol if you want durable workwear in a light fabric, for example if you work indoors and/or in hot environments.



Water-repellent

Clothes carrying this symbol are made of waterproof material. However, it is not possible to put tape on the back of the seams of certain fabrics. Therefore the product cannot be classified as being entirely 100% waterproof, just water-repellent.



Ergonomic fit

All of MASCOT's clothes are, of course, designed for movement. But if you have a particular need for clothing that supports, assists and just plain fits, in all body positions, then go for the ergonomic fit.

Should your product be Premium or Basic?

PREMIUM

Premium – high quality products for repeated use

The material's high quality makes a difference in Premium products. They are made of combed Vortex-spun yarn which keeps them looking good without pilling. The Premium products are also very colourfast so they won't change colour due to sunlight or sweat, which makes them an obvious choice for outdoor use. Choose Premium products if you want T-shirts that retain their premium look and are comfortable to wear even after repeated use and washing.

BASIC

Basic - many colours at a low price

The Basic products are suitable for indoor use. They are generally lower in weight than Premium products.



Modern fit

Most of MASCOT models have a normal, comfortable workwear fit. Recently, we have experienced a higher demand for a slimmer fit. Look for this symbol, if you require clothing to sit a little closer to the body.



Kneepads

If you already use kneepads, then you know how important comfort is in your workday. MASCOT's kneepad pocket design ensures that the kneepads sit perfectly every time you kneel.



Ladies fit

Products with this symbol are designed according to MASCOT's women's fit. The clothing gives you a comfortable and thoroughly tested fit, with great freedom of movement.



Reflective

Small reflective strips on your clothing can be crucial to your safety. Regardless of where you work, traffic can be a factor. In this environment, reflectivity increases your chance of being seen.



DIAMOND fit

DIAMOND is a ladies' fit. This fit is, as a general rule, designed for women with a difference of more than 20 centimetres between their waist and hip measurements. If there is a difference of less than 20 centimetres, then the PEARL fit is preferred. We always recommend that you measure the circumference of hip and waist and use the measuring chart to find the optimal size.



Magnet

Magnets allow for the easy closure of, e.g. breast pockets or for retaining screws and bits in hanging pockets. People with pacemakers or an ICD should not use products fitted with magnets. Magnetically sensitive items should also be kept well away from magnets.



Holster pockets

An indispensable feature for anyone using nails, screws and bits. Select a version with magnets at the top so you do not have to dig down into your pocket every time you need to grab something. Holster Pockets can also be purchased separately.



Recycled polyester

Recycled polyester is made from e.g. recycled plastic bottles and other plastic waste, which has been collected and broken down into granulate and spun into new threads. These threads are used to produce textiles. This converts waste into a new resource, which can then be used for producing textiles.

Certifications and labels

We certify MASCOT products according to international standards, norms and labelling. Some of them are standards for safety workwear that you and/or your employer, must ensure your workwear has. Others, such as Oeko-Tex®, are things MASCOT has chosen to apply for on the products, so you can quickly get an overview of, and find peace of mind in the fact that the products meet the strictest requirements.

In general, MASCOT invests in many norms for each product in order for us to document that the products comply with high international standards.

EN ISO 20471



EN ISO 20471 – High visibility clothing

This class designation (the X next to the symbol) indicates the class in relation to how well the product is able to offer protection. The highest class that can be achieved is class 3. In EN ISO 20471, all reflectors must meet the requirements for class 2 with regard to the reflector's ability to reflect light. If the manufacturer so desires, combined outfits can be classified according to a higher protection class than the one given to a single garment used on its own. The possible higher class is specified on the label of the garment. Clothing that is certified in accordance with this version is tested after washing. Unless otherwise stated on the clothing label, the material has been tested after five wash cycles.



EN 13758-2 – Properties that protect against UV rays

A product certified according to EN 13758-2 provides documented protection against the sun's harmful UVA and UVB rays. The products are labelled with an Ultraviolet Protection Factor (UPF value), which corresponds to the protection capability. A label with, for example, a UPF 20+ factor indicates that a maximum of 1/20 of the sun's harmful rays penetrate the clothing. This means that, thanks to the clothing, you can expose the protected skin to the sun's rays 20 times longer than you would without protection. The protection capability is reduced if, for example, the product becomes worn, if the care instructions are not followed or if the clothing becomes wet. The highest UPF label that the clothing can carry is UPF 40+, which corresponds to a maximum penetration of 2.5% of the sun's harmful rays.

EN 343



EN 343:2019

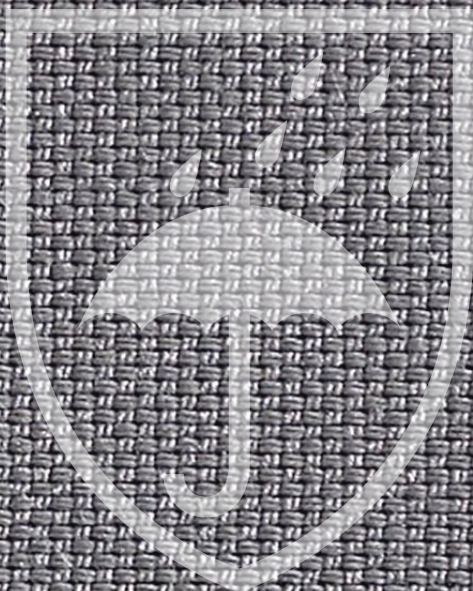
When there's a job that needs to be done whatever the weather, it's important to be properly dressed. EN 343 is used to add different values to clothing that protects against the rain. Next to the symbol are three values. The first number indicates the water tightness, and the second number refers to the breathability of the overall product. Both values are divided into classes from 1-4, with 4 indicating the highest class. The lowest value is an optional test of the finished product to test the impact of rainfall from above. R indicates that the product has been tested, X indicates that the product has not been tested.

EN 342



EN 342

The best way to protect yourself from the cold is to use workwear that is certified in accordance with EN 342:2017. In order to obtain maximum protection, your workwear should be kept dry and tight around openings, such as the wrists, for example. You will also need to wear gloves and a hat, etc, in order to avoid local cooling. Each individual product is classified in accordance with different values: thermal insulation value (Y), degree of air permeability (AP) and, if applicable, waterproofness (WP).



CLIMASCOT® Lightweight Insulation

CLIMASCOT®

Benefit from a lining of the brand CLIMASCOT® Lightweight Insulation. Besides having a high insulating power, CLIMASCOT® gives you a breathable lightweight material that takes up very little room when compressed. Recycled polyester is used in CLIMASCOT® in order to protect our environment and to reuse as many resources as possible. The CLIMASCOT® lining is thus made from 35% recycled polyester.

ProWash®

ProWash®

ProWash® is MASCOT's term for products that tolerate industrial washing and drying. It is the label to look for when you need products that tolerate industrial washing. MASCOT's assortment includes products that are tested according to the methods recommended in EN ISO 15797, and are washable at up to 85 degrees. The assortment also includes products that tolerate industrial washing at up to 60 degrees.

CORDURA® F A B R I C

CORDURA®

High durability is crucial when you are working at a fast pace. Holster pockets and ruler pockets have to stand the pressure when tools, nails and screws are taken in and out of the pockets countless times throughout the day. MASCOT ensures durability by using lots of CORDURA® fabric on all the exposed places, such as kneepad pockets, holster pockets and ruler pockets. CORDURA® fabric is in fact seven times stronger than cotton. We use both 1000D CORDURA® and the lighter 500D CORDURA®.



Oeko-tex®

MASCOT's products are Oeko-Tex® Standard 100 labelled. The Oeko-Tex® Standard 100 is the world's leading health label for textiles. By providing Oeko-Tex®-labelled clothing, employers ensure that their employees are not subjected to chemicals and colourants that are harmful, or presumed harmful, to their health.

Find the correct size

The right size is crucial for the workwear's functionality, and for your comfort and safety. In MASCOT's assortment, many products have a fit that can be used by both men and women. In addition, you will find MASCOT products that are especially designed for women, as well as an assortment for children.

To find the right size, and get the most accurate measurement, we recommend that someone else measures you. Take the measurements close to the body. Also remember to measure your leg length. In most of MASCOT's trousers, you can choose between three leg lengths.

If you're a woman, you have several options

Many of MASCOT's ranges are available in one or more ladies fits. If you choose a product for women, please ensure you measure according to the ladies fit and the sizes form for women. Some of the men's products also fit women. If you pick a men's product, the measurements must be taken from the men's fit and sizes form for men.

Measurements for men's fit



Measurements for ladies fit



H. Head measure

Measure the circumference of the head.

P. Collar size

Measured around the neck – 1 cm above the collar bone.

A. Chest

Measured around the widest part of the chest.

K1. Waist size

Measure the waist size just above the navel. You need to tighten the measuring tape.

K2. Waist size

Measure the waist size just below the navel. You need to tighten the measuring tape.

K3. Waist size

Measure the narrowest point of your waist. Your waist size is used together with your hip size to find your fit – DIAMOND or PEARL.

L1. Hip size

Measured around the widest point of the hips.

L2. Hip size

Measured with legs together around the widest point of the hip. In MASCOT's products for women, it is the hip measurement that determines which size to choose.

E. Inner seam

The length is measured on the inside of the leg from crotch to floor (barefoot).

T. Height

Your full height.

Try the clothes on!

In that way, you are sure that the clothing fits as it should.

How to find your size in the measuring chart

For example: You are looking for trousers with a low waist.
Your waist measurement (K2) is 92 cm.
Find your measurement under K1/K2 in the chart. If your size fall between two sizes, you should choose the larger size.
In this example you should choose 93 cm and therefore the size C52. Remember also to measure your leg length before you order.

MEN

T-shirts, sweatshirts, jackets and additional tops as well as boilersuits																						
	C42	C43	C44	C45	C46	C47	C48	C49	C50	C51	C52	C54	C56	C58	C60	C62	C64	C66	C68	C70	C72	C74
	XXS		XS		S				M		L		XL	2XL		3XL		4XL		5XL		6XL
A - Chest (cm)	84	86	88	90	92	94	96	98	100	102	104	108	112	116	120	124	128	132	136	140	144	148
A - Chest (inch)	33		34.5		36		38		39.5		41	42.5	44	45.5	47	49	50.5	52	53.5	55	56.5	58

Shirts																						
	C42	C43	C44	C45	C46	C47	C48	C49	C50	C51	C52	C54	C56	C58	C60	C62	C64	C66	C68	C70	C72	
	XXS		XS		S				M		L		XL	2XL		3XL		4XL		5XL		
P - Collar size (cm)					37-38				39-40		41-42		43-44	45-46		47-48	49-50		51-52		53-54	
P - Collar size (inch)					14.5				15.5		16.5		17.5	18		19	19.5		20		21	

Shirts (Signature)												
	37	38	39	40	41	42	43	44	45	46	47	48
	S	S	M	M	L	L	XL	XL	2XL	2XL	3XL	3XL
A - Chest (cm)	92	95	98	101	104	107	110	113	116	120	124	128
A - Chest (inch)	36	37.4	38.5	39.7	41	42	43	44.5	45.5	47	49	50.5
P - Collar size (cm)	37	38	39	40	41	42	43	44	45	46	47	48
P - Collar size (inch)	14.5	15	15.5	15.7	16.1	16.5	16.9	17.3	17.7	18.1	18.5	18.9

Trousers/bib & braces																						
EU	C42	C43	C44	C45	C46	C47	C48	C49	C50	C51	C52	C54	C56	C58	C60	C62	C64	C66	C68	C70	C72	C74
UK/US	27	28	28.5	29.5	30.5	31.5	32.5	33.5	34.5	35.5	36.5	38.5	40.5	42.5	44.5	46.5	48.5	50.5	52.5	54.5	56.5	58
F/CH	36	37	38	39	40	41	42	43	44	45	46	48	50	52	54	56	58	60	62	64	66	68
	XXS		XS		S				M		L		XL	2XL		3XL		4XL		5XL		6XL
K1/K2 Waist size (cm)*	68	70	73	75	78	80	83	85	88	90	93	98	103	108	113	118	123	128	133	138	143	148
K1/K2 Waist size (inch)*	27	28	28.5	29.5	30.5	31.5	32.5	33.5	34.5	35.5	36.5	38.5	40.5	42.5	44.5	46.5	48.5	50.5	52.5	54.5	56.5	58
L1 - Hip (cm)	90	92	94	96	98	100	102	104	106	108	110	114	118	122	126	130	134	138	142	146	150	154
L1 - Hip (inch)	35.5	36	37	38	38.5	39.5	40	41	41.5	42.5	43	45	46.5	48	49.5	51	52.5	54	56	57.5	59	60.5

*Bib & braces are not available in odd-sizes.

E - Leg length (cm)	76	82	90
E - Leg length (inch)	30	32	35

Jeans									
K1/K2 - Waist size (inch)	29	30	31	32	33	34	36	38	40
K1/K2 - Waist size (cm)	73	76	78.5	81	83.5	86	91	96	101

E - Leg length (inch)	30	32	34	36
E - Leg length (cm)	76	82	87	92

Headgear										
	S		M		L		XL		2XL	
H - Head measure (cm)	54	55	56	57	58	59	60	61	62	63
H - Head measure (inch)	21	21.5	22	22.5	23	23.25	23.5	24	24.5	25

WOMEN

MASCOT offers a wide range of products developed especially for women.

Tops										
	XS	S	M	L	XL	2XL	3XL	4XL	5XL	6XL
A - Chest (cm)	76	82	88	96	104	112	120	128	136	144
A - Chest (inch)	30	32	34.5	37.5	41	44	47	50.5	53.5	56.5
L2 - Hip (cm)	86	92	100	108	116	124	132	140	148	156
L2 - Hip (inch)	34	36	39.5	42.5	45.5	49	52	55	58	61.5

Women's trousers in the MASCOT® SAFE range come in the DIAMOND fit.

Two steps to help you find trousers that are just right for you:

1) Find your fit

Your MASCOT fit will depend on a combination of your waist size (the narrowest part) and your hip size (the widest part). The general rule of thumb is that if there is a difference of more than 20 centimetres between your hip and your waist then you should opt for a DIAMOND fit.

2) Find your size

You can find your size by measuring the circumference of your hip at its widest point. Keep your legs together when measuring hip width. Determine your size based on the circumference of your hip.



Ladies trousers and skirts

DIAMOND fit: A difference between waist and hip measurements of more than 20 cm.

EU	C32*	C34	C36	C38	C40	C42	C44	C46	C48	C50	C52	C54	C56
UK	UK4*	UK6	UK8	UK10	UK12	UK14	UK16	UK18	UK20	UK22	UK24	UK26	UK28
F/CH	32*	34	36	38	40	42	44	46	48	50	52	54	56
	XS	S	M		L		XL	2XL		3XL	4XL	5XL	6XL
K3 - Waist size (cm)	70	74	78	82	86	90	94	98	104	110	116	122	128
K3 - Waist size (inch)	27.5	29	30.5	32	34	35.5	37	38.5	41	43.5	45.5	48	50.5
L2 - Hip (cm)	96	100	104	108	112	116	120	124	130	136	142	148	154
L2 - Hip (inch)	37.5	39.5	41	42.5	44	45.5	47	49	51	53.5	56	58	60.5

*C32/UK4/32 is only available in MASCOT® FOOD & CARE.

E - Leg length (cm)	76	82
E - Leg length (inch)	30	32



MASCOT®

Sustainable production

The vast majority of MASCOT's products is produced in the company's own factories, where production is conducted efficiently and with great respect for the environment and people.



MASCOT takes its responsibility for the environment and people seriously

MASCOT strives to create sustainable solutions throughout the entire production chain. As a global textiles company, we have an enormous responsibility to safeguard the people and the environment at our production sites and throughout the rest of our supply chain. This is a responsibility that we take very seriously.



The 17 sustainability goals describe a number of global challenges. These commit all UN member countries to strive towards achieving the goals. The global goals are interdependent and balance the three dimensions of sustainable development: economical, social and environmental development.

The 17 global goals

The UN has formulated 17 global goals for sustainable development, which it expects all countries, companies and organisations to meet by 2030. The 17 global goals are common points of orientation, so that all players can realise the global need for business solutions that can help create a sustainable future for the generations to come.

MASCOT and the global goals

MASCOT works with all of the 17 global goals at different levels, and we will continue to develop and intensify our work in this area towards 2030. As part of our workwear production, we want to help eliminate poverty and hunger, ensure health and education for all, and provide decent jobs, among other things. Read more about how we do this on the following pages.



Decent jobs bring people out of poverty





Eliminate poverty

MASCOT produces clothing in countries where poverty is a challenge. By offering good, decent jobs with reasonable pay, we help increase living standards in these areas.

In Laos, 22.7% of the population lives in extreme poverty. In Vietnam, this figure is 2.6%. MASCOT is continually expanding production in Laos, so that we can employ more people and help reduce the number of people who live in extreme poverty. Employees are typically recruited to the factories from surrounding villages, where extreme poverty is rife. To reduce employees' costs and increase their personal safety, MASCOT also provides daily transport between the factory and villages.



Gender equality

The 5th global goal focuses on ensuring gender equality, and on ensuring that women's and girls' rights are strengthened globally.

More than 2,400 of MASCOT's employees work outside Europe, where gender inequality in society tends to be the greatest. Gender inequality here is noted in areas such as health, co-management and business activity.

At MASCOT's factories in Vietnam, 86% of employees are women. In MASCOT's Laos factories, 81% of employees are women. MASCOT's policy is naturally for all employees to have the same opportunities, just as it is always the best qualified people who are employed, regardless of gender. With a majority of female employees, we reduce gender inequality, as business activity helps increase equality. Access to the company's free medical clinic also means that women's access to better health is increased.



Decent jobs and economic growth

MASCOT invests heavily in innovation and market development. Both of these generate growth, which results in further productive employment as MASCOT's investments are made in both technology and management systems. This also applies to our production in Vietnam and Laos.

Salaries for MASCOT's employees in Vietnam and Laos are increasing far more, year on year, on a percentage basis, than salaries in Europe. This means that MASCOT not only helps reduce inequality across borders, we also help to generally increase the level of pay in those areas where we have factories. And with the good working environment that we offer our employees, we also increase the working conditions in the local area in general, as otherwise employers in the region would lose their employees. We create decent jobs and thereby give other players in the local area an incentive to do the same.



Healthy employees

When you set up production facilities in developing countries, you have an obligation to increase health, wellbeing and safety for employees. Or at least that is how MASCOT sees it. That is why MASCOT provides free access to medical assistance and health information, as well as a free nutritious lunch for all employees.



Free lunch

Every day, MASCOT employees sit down to lunch and get a good, nutritious meal. MASCOT's doctors and nurses work closely with the chefs, and food samples are taken every day in order to ensure high levels of quality and to ensure a sufficient calorie content. MASCOT's lunch helps increase food safety and to improve the standard of nutrition for employees.



Happy and healthy employees are good employees

MASCOT has around 2,400 employees in Southeast Asia working in a European work culture and with MASCOT's strong values. This results in safe, secure and decent workplaces with huge development potential for MASCOT's employees. The employment contract also includes access to a free medical clinic, health information, training in safety, and a good, free lunch.

Healthy and happy employees have energy for their job. This is noticeable in the production in Vietnam and Laos. Just like the European MASCOT employees, they are dedicated to the mission of creating the world's best workwear - based on durability in both production quality and in socially responsible production.



Free access to doctors and healthcare staff

All employees at MASCOT's factories can visit MASCOT's state-certified health clinics on a daily basis. The doctors and nurses don't just provide treatments. They also provide preventative healthcare and create information campaigns on various health topics. They also work on creating a positive mental working environment.





Responsible production

Durable products are sustainable products

Responsible consumption is, for example, buying products that last a long time, to avoid frequently buying new products and using new resources. This also applies to workwear.

MASCOT only offers products that have been tested for long-term use. This applies to everything from fabric and reinforced seams to extra reinforcement in areas that are particularly subjected to wear and tear. We produce clothes in our own factories and can therefore guarantee 100% quality control. All this means that MASCOT's products last a long time. And this has a major impact on the sustainable balance sheet.

To ensure quality, many of the fabric types have undergone a thorough course of testing, such as wear tests, tear strength tests and break tests. High quality is at the core of MASCOT's DNA. MASCOT's slogan and consistent work method has always been TESTED TO WORK.



Recycled resources

Many resources are used in the world's industries, but there will not always be an endless supply of new resources. That is why we need to focus on using recycled materials - waste and used materials - that can be recycled. That's what we do at MASCOT.

All of MASCOT's padded lining is made using a large amount of recycled polyester. MASCOT also has a large range of T-shirts, polo shirts and sweatshirts made from recycled plastic, which has been transformed into new polyester yarns. Other products are made from organic cotton, which means that the cotton is grown without the use of pesticides or sprayed chemicals.

Not all products are made from recycled materials, as in some areas this can affect, for example, wear resistance, quality or colour. However, a large part of the packaging comes from recycled materials. At MASCOT, cardboard boxes, paper and a new generation of plastic product bags are either wholly or partly made from recycled materials.



12 RESPONSIBLE CONSUMPTION AND PRODUCTION



Responsible consumption and production

Economic growth and sustainable development require that we show due care and diligence when using our products and resources. We must ensure that our consumption and the way we produce our clothes around the world are done responsibly and with respect for current and future people and the environment.



Minimising waste, energy consumption and rubbish in production

Sustainable production also includes limiting waste, rubbish and emissions. Producing clothing is a comprehensive and global process. There are many stages involved.

Fabric and other raw materials

We work with all suppliers towards a general reduction in the use of chemicals and water. We also choose suppliers based on their environment profile. Most of our piece goods come from suppliers that have both Bluesign® and are ISO 14001 certified. We are also striving to convert part of the dyeing process to dyeing without or with only minimal use of water.

Own production

MASCOT has a great advantage in that we produce the majority of our products ourselves. 75% of all products are made in our own factories, where we control the processes. MASCOT's factories are located in official, established industrial zones that have been approved by the state ministries in Vietnam and in Laos. All have a comprehensive environment policy and ongoing control of waste management. Wastewater treatment is undertaken by the industrial zones and monitored by environmental agencies. Inspections are made quarterly. MASCOT sorts and registers all waste and as much as possible is collected with recycling in mind. Fabric off-cuts from production are heavily minimised and are also sorted and recycled. MASCOT also has a policy around sustainable climate impact that applies to its own factories, and initiatives are regularly being launched to reduce the production's impact on the environment.



CSR-certified production

MASCOT's production is certified according to the most comprehensive certification within CSR – SA8000.

The vast majority of MASCOT's products – from our winter clothing to our workwear – is made at our very own factories. When many millions of quality products need to be produced each year in an effective production chain, there is a definite need for skilled and dedicated employees. That is why we have our own, experienced HR departments, both in Vietnam and in Laos. Since we recruit all of our employees ourselves, we can guarantee compliance with the minimum age

limit for full time work and ensure that there is no child labour at our factories. All employees have good employment conditions with good salaries, and there is complete transparency with regards to remuneration and bonuses. Any overtime hours are reported in advance and remunerated in accordance with higher percentage rates. Employees naturally have freedom of association and the right to collective bargaining.

Companies that achieve SA8000 have, for example:



No child labour



No forced labour



A good working environment adapted to local conditions



Reasonable working hours and wages



The right to organise



No discrimination



An effective management system for control of subcontractors' employee relations

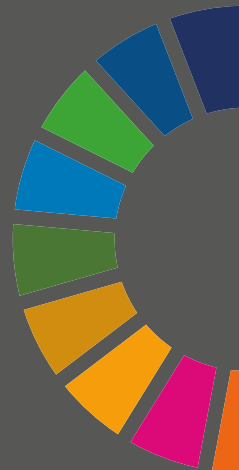


Health and Safety

Read more about SA8000 here: www.mascotworkewear.com/en/sa8000



No one can solve the global challenge alone



Partnerships for the goals

The 17th global goal is about partnerships. No one can solve the global challenge alone. It requires collaboration and forward-looking partnerships.

MASCOT already has a long line of established partnerships with stakeholders in our production countries. We collaborate with ministries and governments, just as we collaborate with organisations that work with the textile industry, so that together with other stakeholders we can promote both social and environmental conditions in the world's textile-producing countries.

MASCOT is constantly building new partnerships. For example, we are currently working on partnership with several different players in the value chain, to invest with them in new technologies that can create a more sustainable and rational production.



MASCOT is a member of the Fair Wear Foundation. Together with around 100 other textile producing companies, MASCOT strives via Fair Wear to increase social responsibility in all textile-producing factories around the world.



Highly automated logistics centre

When you buy one of our products, you also get security of supply and efficient service. MASCOT stocks all products in all sizes and colours, so you won't have to wait long for the products you want. We process orders within 24 hours from when you place your order and dispatch all products as quickly as possible. Our highly modern and automated logistics centre makes sure that all orders are sent out fast and flawless.

5

million products in stock

More than

98%

of all orders are dispatched within 24 hours

30,000

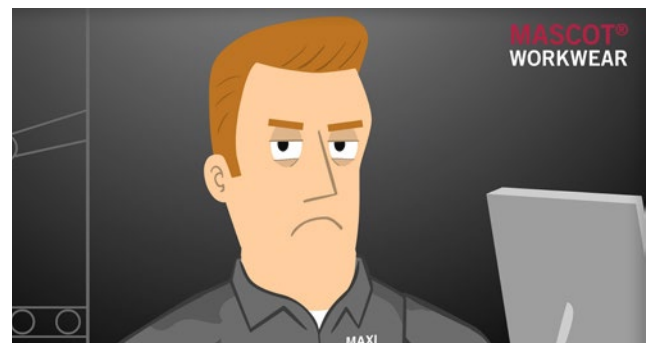
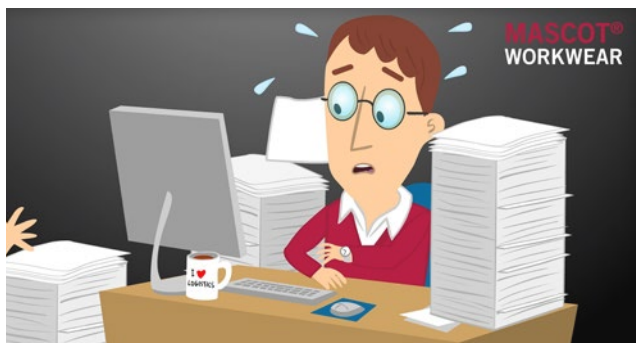
item numbers

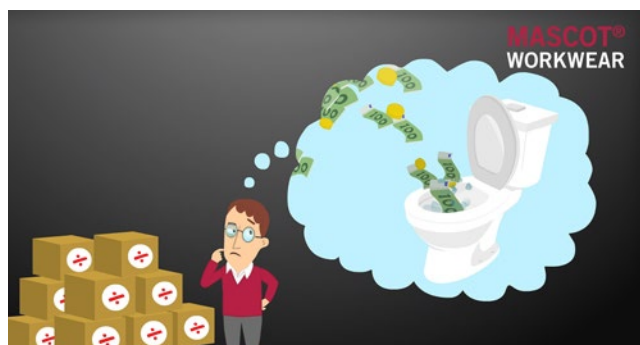




MASCOT® SmartStore

MASCOT® SmartStore is an online logistics and ordering system. The system is developed to make your order management as fast and problem-free as possible. It is adapted for each company's product range and needs within workwear and personal protective gear. Contact your local MASCOT distributor to get started right away.





Global Workwear Solution



MASCOT offers a seamless workwear solution for multinational companies, across borders. If your company employs more than 1,000 workwear users internationally, you'll get all the benefits of having only one contact point at MASCOT.

Save time and money on administration with a global agreement

Do you run your business activities across borders? At MASCOT, we can simplify your workwear purchasing process and offer one solution for your company – globally.

MASCOT manages your global workwear solution

- Fast, flawless worldwide delivery - with minimal administration
- Worldwide central project management - with one contact point
- A distribution network across Europe as well as resellers around the globe
- Uniformity in quality, products and services



MASCOT®

LogoService



Printing and embroidery

MASCOT can provide printing and embroidery as an integrated part of your workwear order. Whatever solution you choose, adding a printed logo or a piece of embroidery to your order is really simple. We process all printing orders quickly and effectively, making sure that your employees receive their custom-branded clothing within good time.







MASCOT – a quick, easy and quality conscious choice

It is easy to do business with MASCOT. You have an entire assortment of workwear and safety footwear at your disposal – from head to toe and for all seasons. You only need to shop in one place, and you'll get international support all over the world. In addition, you can automate many aspects of your trade with MASCOT, as you wish.

It is also quick to do business with MASCOT. We offer user-friendly, online ordering platforms that will save you time and minimise errors. We process orders from all over the world within 24-48 hours from a fully automated, ultramodern logistics centre with a continuous inventory of more than 5 million products. Flawless and fast – and, if you wish, we can man-pack the workwear.

If you choose MASCOT, you also make a quality conscious decision. It is not just that the workwear and safety footwear are thoroughly tested and of the

highest quality, it is also that MASCOT offers you the most efficient ordering and service solutions. Last but not least, it means that when you buy products from MASCOT, you know they are manufactured under good working conditions. The vast majority of MASCOT's products are manufactured on our own CSR-certified factories in Vietnam and Laos. We guarantee good working conditions – and socially responsible workwear.

When you do business with MASCOT, you do business with a company that continuously develops its products, services and solutions. We constantly focus on the opportunities and limitations of our customers and potential customers. These inputs are the focal point in the development of new products and solutions from MASCOT. We will be one step ahead to deliver the best solutions to our customers because that means our customers also are a step ahead.



**2800+
EMPLOYEES**



**OVER 3500
DISTRIBUTORS
WORLDWIDE**



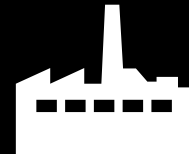
**INTERNATIONAL
AWARDS**



**FOUNDED IN
1982**



**FAMILY
OWNED**



**OWN PRODUCTION
IN VIETNAM AND
LAOS**

**30000+
ITEM
NUMBERS**



**700+ UNIQUE
PRODUCTS**



**5,000,000+
PRODUCTS
IN STOCK**



**EFFECTIVE
FLOW WITH
SAP**



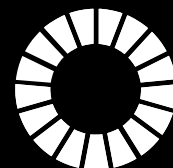
**SALES STAFF IN
15 EUROPEAN
COUNTRIES**



**DELIVERY
RELIABILITY
AT >98%**

**SA8000
SOCIALY
RESPONSIBLE
PRODUCTION**

**ISO 9001
CERTIFIED**



**WORKING
TOWARDS A
SUSTAINABLE
FUTURE**

Mascot International A/S

Silkeborgvej 14 · 7442 Engesvang · Denmark
Tel. +45 87 24 47 00 · Customer service +44 161 504 0960
info@mascotworkwear.co.uk · www.mascotworkwear.co.uk



MASCOT® is a registered trademark, owned by Mascot International A/S.
No liability accepted for product alterations, price changes, printing errors and inability to supply or deliver.



www.facebook.com/MascotWorkwear



www.linkedin.com/company/mascot-international-as



www.youtube.com/mascotinternational



www.instagram.com/mascot_workwear/

5 711074 942695

B0592-121-04 - EN 032021

